

Product datasheet for **TA329327**

AEBP2 Rabbit Polyclonal Antibody

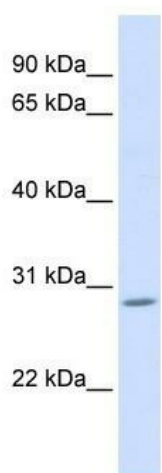
Product data:

Product Type:	Primary Antibodies
Applications:	WB
Recommended Dilution:	WB
Reactivity:	Human
Host:	Rabbit
Isotype:	IgG
Clonality:	Polyclonal
Immunogen:	The immunogen for anti-AEBP2 antibody: synthetic peptide directed towards the C terminal of human AEBP2. Synthetic peptide located within the following region: FDAQTLDAIRHRAICFNLSAHIESLGKGHSVVFHSTVIAKRKEDSGKIKL
Formulation:	Liquid. Purified antibody supplied in 1x PBS buffer with 0.09% (w/v) sodium azide and 2% sucrose. <i>Note that this product is shipped as lyophilized powder to China customers.</i>
Conjugation:	Unconjugated
Storage:	Store at -20°C as received.
Stability:	Stable for 12 months from date of receipt.
Predicted Protein Size:	33 kDa
Gene Name:	AE binding protein 2
Database Link:	NP_694939 Entrez Gene 121536 Human Q6ZN18
Background:	AEBP2 is a DNA-binding transcriptional repressor. It may interact with and stimulate the activity of the PRC2 complex, which methylates 'Lys-9' and 'Lys-27' residues of histone H3.
Synonyms:	MGC17922
Note:	Immunogen sequence homology: Dog: 100%; Pig: 100%; Rat: 100%; Horse: 100%; Human: 100%; Mouse: 100%; Bovine: 100%; Rabbit: 100%; Guinea pig: 100%; Zebrafish: 93%



[View online »](#)

Product images:



WB Suggested Anti-AEBP2 Antibody Titration: 0.2-1 ug/ml; Positive Control: Human Muscle