

Product datasheet for **TA329326**

ERCC8 Rabbit Polyclonal Antibody

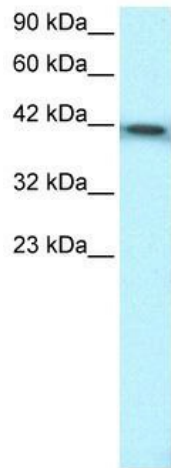
Product data:

Product Type:	Primary Antibodies
Applications:	IHC, WB
Recommended Dilution:	WB, IHC
Reactivity:	Human
Host:	Rabbit
Isotype:	IgG
Clonality:	Polyclonal
Immunogen:	The immunogen for anti-ERCC8 antibody: synthetic peptide directed towards the C terminal of human ERCC8. Synthetic peptide located within the following region: QELYSGRDCNILAWVPSLYEPVPDDDETTTKSQLNPAFEDAWSSSDEEG
Formulation:	Liquid. Purified antibody supplied in 1x PBS buffer with 0.09% (w/v) sodium azide and 2% sucrose. <i>Note that this product is shipped as lyophilized powder to China customers.</i>
Conjugation:	Unconjugated
Storage:	Store at -20°C as received.
Stability:	Stable for 12 months from date of receipt.
Predicted Protein Size:	44 kDa
Gene Name:	ERCC excision repair 8, CSA ubiquitin ligase complex subunit
Database Link:	NP_000073 Entrez Gene 1161 Human Q13216
Background:	ERCC8 (excision repair cross-complementing rodent repair deficiency, complementation group 8 isoform 1) is a WD repeat protein, which interacts with Cockayne syndrome type B (CSB) protein and with p44 protein, a subunit of the RNA polymerase II transcript
Synonyms:	CKN1; CSA; UVSS2
Note:	Immunogen sequence homology: Human: 100%; Dog: 93%; Horse: 86%; Pig: 79%; Rat: 79%; Rabbit: 79%
Protein Families:	Druggable Genome, Transcription Factors

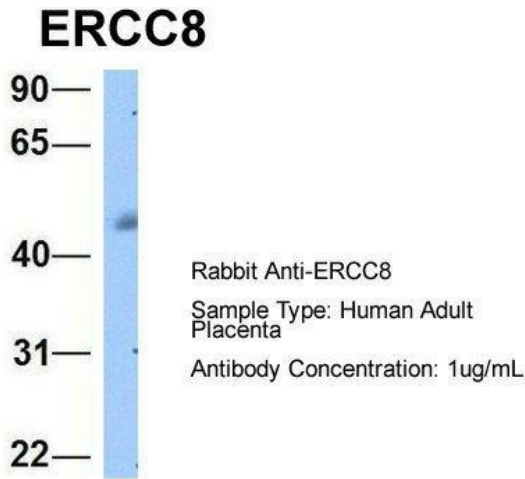


[View online »](#)

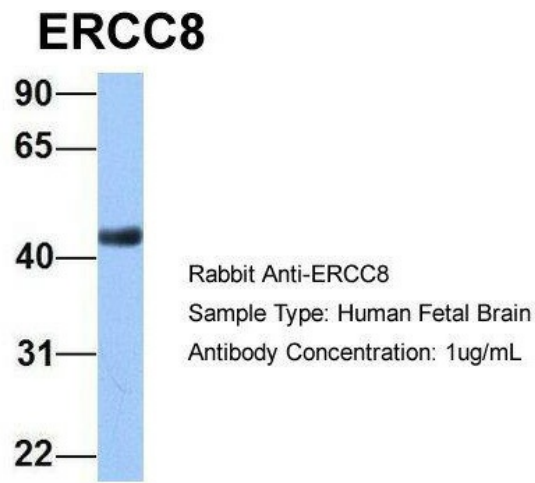
Protein Pathways: Nucleotide excision repair, Ubiquitin mediated proteolysis

Product images:

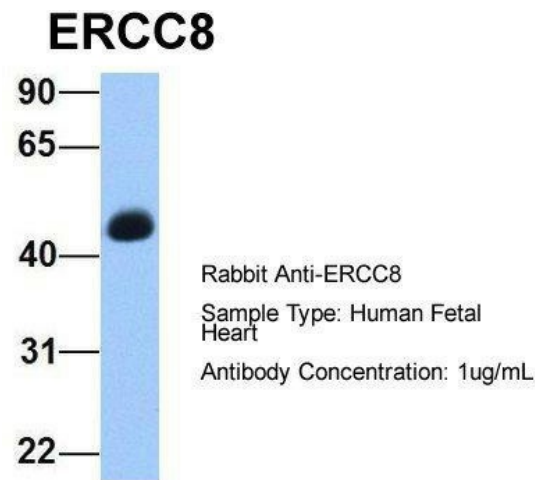
WB Suggested Anti-ERCC8 Antibody Titration: 0.1-5.0ug/ml; ELISA Titer: 1:62500; Positive Control: Jurkat cell lysate



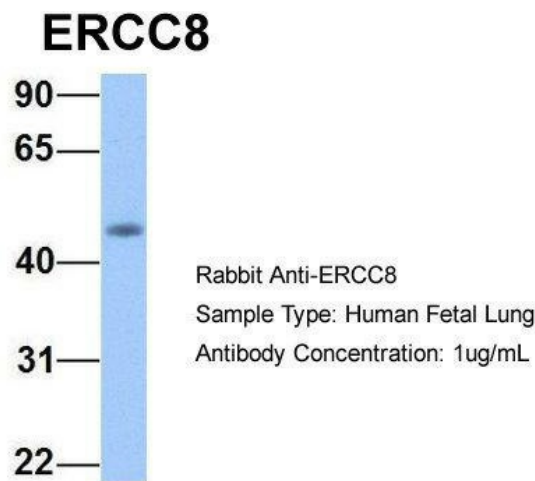
Host: Rabbit; Target Name: ERCC8; Sample Tissue: Human Adult Placenta; Antibody Dilution: 1.0ug/ml



Host: Rabbit; Target Name: ERCC8; Sample Tissue: Human Fetal Brain; Antibody Dilution: 1.0ug/ml

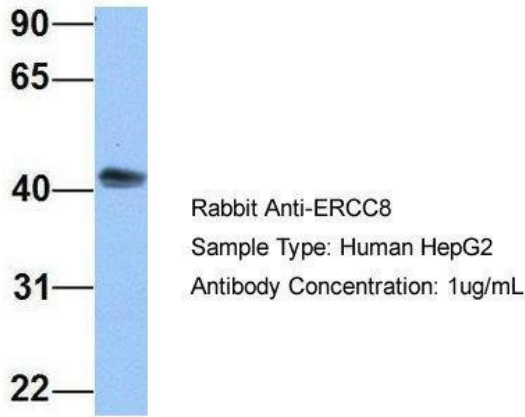


Host: Rabbit; Target Name: ERCC8; Sample Tissue: Human Fetal Heart; Antibody Dilution: 1.0ug/ml

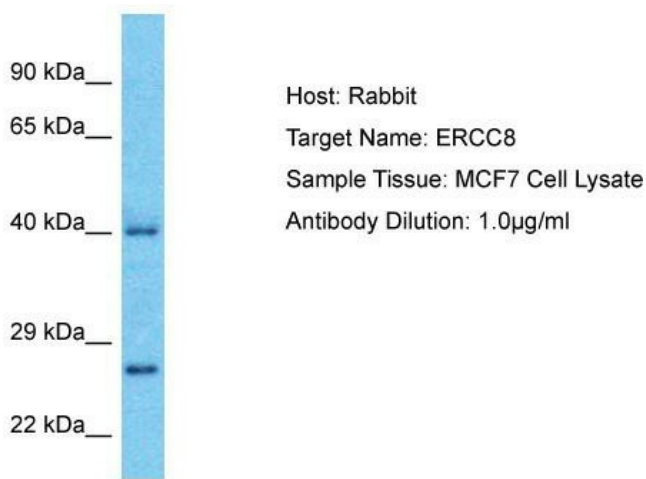


Host: Rabbit; Target Name: ERCC8; Sample Tissue: Human Fetal Lung; Antibody Dilution: 1.0ug/ml

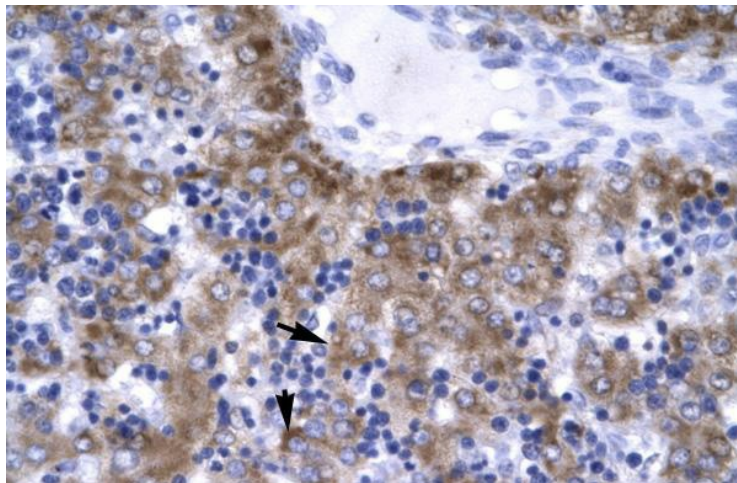
ERCC8



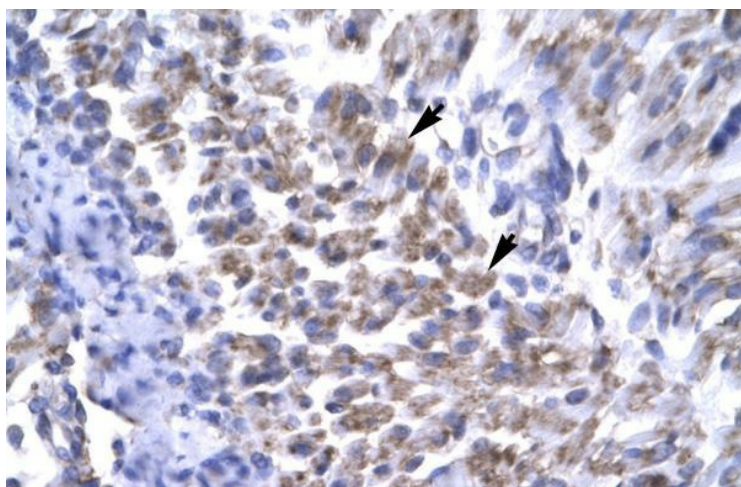
Host: Rabbit; Target Name: ERCC8; Sample Tissue: Human HepG2; Antibody Dilution: 1.0ug/ml; ERCC8 is supported by BioGPS gene expression data to be expressed in HepG2



Host: Rabbit; Target Name: ERCC8; Sample Tissue: MCF7 Whole Cell lysates; Antibody Dilution: 1.0ug/ml



Human Liver



Human Muscle