

Product datasheet for **TA329324**

OSR2 Rabbit Polyclonal Antibody

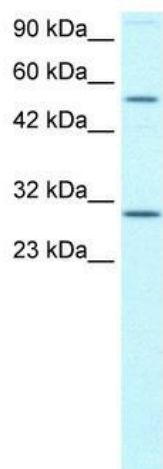
Product data:

Product Type:	Primary Antibodies
Applications:	WB
Recommended Dilution:	WB
Reactivity:	Human
Host:	Rabbit
Isotype:	IgG
Clonality:	Polyclonal
Immunogen:	The immunogen for anti-OSR2 antibody: synthetic peptide directed towards the N terminal of human OSR2. Synthetic peptide located within the following region: YSFLQAVNTFPATVDHLQGLYGLSAVQTMHMNHWTLGYPNVHEITRSTIT
Formulation:	Liquid. Purified antibody supplied in 1x PBS buffer with 0.09% (w/v) sodium azide and 2% sucrose. <i>Note that this product is shipped as lyophilized powder to China customers.</i>
Conjugation:	Unconjugated
Storage:	Store at -20°C as received.
Stability:	Stable for 12 months from date of receipt.
Predicted Protein Size:	31 kDa
Gene Name:	odd-skipped related transcription factor 2
Database Link:	NP_443727 Entrez Gene 116039 Human Q8N2R0
Background:	Osr2 is a zinc finger containing protein related to Drosophila Odd-skipped. Its mRNA expression is specifically activated in the nascent palatal mesenchyme at the onset of palatal outgrowth. Osr2 mutants exhibit altered gene expression patterns, including those of Osr1, Pax9 and Tgfb3, during palate development.
Synonyms:	FLJ90037
Note:	Immunogen sequence homology: Human: 100%; Dog: 93%; Pig: 93%; Rat: 93%; Horse: 93%; Mouse: 93%; Bovine: 93%; Rabbit: 93%; Guinea pig: 93%



[View online »](#)

Product images:



WB Suggested Anti-OSR2 Antibody Titration: 0.2-1 ug/ml; ELISA Titer: 1:12500; Positive Control: Hela cell lysate