

## Product datasheet for TA329322

### KLF8 Rabbit Polyclonal Antibody

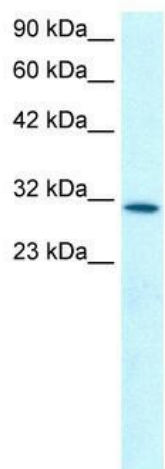
#### Product data:

Product Type:	Primary Antibodies
Applications:	IHC, WB
Recommended Dilution:	WB, IHC
Reactivity:	Human
Host:	Rabbit
Isotype:	IgG
Clonality:	Polyclonal
Immunogen:	The immunogen for anti-KLF8 antibody: synthetic peptide directed towards the N terminal of human KLF8. Synthetic peptide located within the following region: LSFHKPKAPLQPASMLQAPIRPPKPQSSPQTLVSTSTSDMSTSANIPTV
Formulation:	Liquid. Purified antibody supplied in 1x PBS buffer with 0.09% (w/v) sodium azide and 2% sucrose. <i>Note that this product is shipped as lyophilized powder to China customers.</i>
Conjugation:	Unconjugated
Storage:	Store at -20°C as received.
Stability:	Stable for 12 months from date of receipt.
Predicted Protein Size:	39 kDa
Gene Name:	Kruppel-like factor 8
Database Link:	<a href="#">NP_009181</a> <a href="#">Entrez Gene 11279 Human</a> <a href="#">O95600</a>
Background:	KLF8 is abnormally expressed in female patients with X autosome translocation t(X;21) (p11.2;q22.3) and non-syndromic mental retardation.
Synonyms:	BKLF3; ZNF741
Note:	Immunogen sequence homology: Human: 100%; Rabbit: 86%; Dog: 79%; Bovine: 79%; Horse: 77%
Protein Families:	Transcription Factors

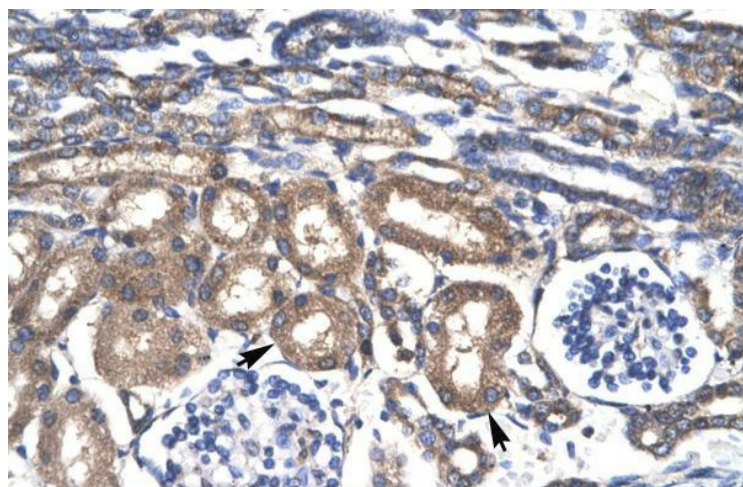


[View online »](#)

## Product images:



WB Suggested Anti-KLF8 Antibody Titration: 0.2-1 ug/ml; ELISA Titer: 1:2500; Positive Control: Human Kidney



Human kidney