

Product datasheet for **TA329321**

EAP30 (SNF8) Rabbit Polyclonal Antibody

Product data:

Product Type:	Primary Antibodies
Applications:	IHC, WB
Recommended Dilution:	WB, IHC
Reactivity:	Human
Host:	Rabbit
Isotype:	IgG
Clonality:	Polyclonal
Immunogen:	The immunogen for anti-EAP30 antibody: synthetic peptide directed towards the N terminal of human EAP30. Synthetic peptide located within the following region: MHRRGVAGAGAIKKKLAEAKYKERGTVLAEDQLAQMSKQLDMFKTNLEEF
Formulation:	Liquid. Purified antibody supplied in 1x PBS buffer with 0.09% (w/v) sodium azide and 2% sucrose. <i>Note that this product is shipped as lyophilized powder to China customers.</i>
Conjugation:	Unconjugated
Storage:	Store at -20°C as received.
Stability:	Stable for 12 months from date of receipt.
Predicted Protein Size:	29 kDa
Gene Name:	SNF8, ESCRT-II complex subunit
Database Link:	NP_009172 Entrez Gene 11267 Human Q96H20



[View online »](#)

Background: ELL encodes an RNA polymerase II transcription factor that undergoes frequent translocation in acute myeloid leukemia (AML). In addition to its elongation activity, ELL contains a novel type of RNA polymerase II interaction domain that is capable of repressing polymerase activity in promoter-specific transcription. EAP30 is a subunit of the ELL complex. EAP30 can interact with ELL and derepress ELL's inhibitory activity in vitro. SNF8, VPS25 (MIM 610907), and VPS36 (MIM 610903) form ESCRT-II (endosomal sorting complex required for transport II), a complex involved in endocytosis of ubiquitinated membrane proteins. SNF8, VPS25, and VPS36 are also associated in a multiprotein complex with RNA polymerase II elongation factor (ELL; MIM 600284) (Slagsvold et al., 2005 [PubMed 15755741]; Kamura et al., 2001 [PubMed 11278625]). [supplied by OMIM]

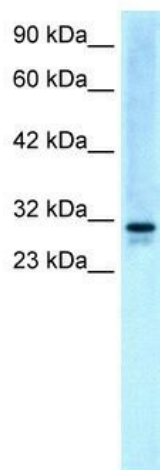
Synonyms: Dot3; EAP30; VPS22

Note: Immunogen sequence homology: Dog: 100%; Pig: 100%; Rat: 100%; Horse: 100%; Human: 100%; Mouse: 100%; Bovine: 100%; Rabbit: 100%; Guinea pig: 100%; Zebrafish: 93%

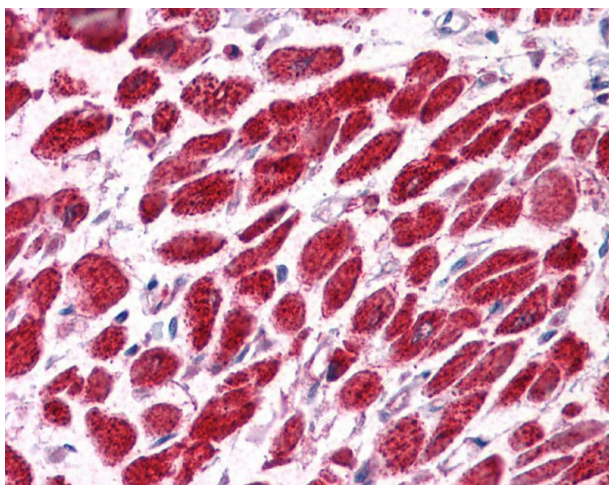
Protein Families: Transcription Factors

Protein Pathways: Endocytosis

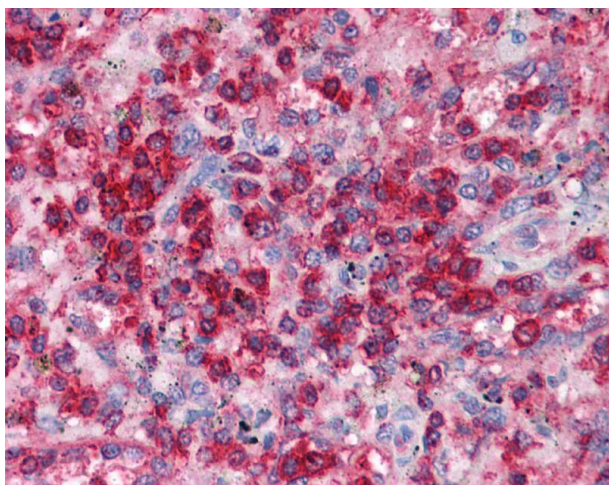
Product images:



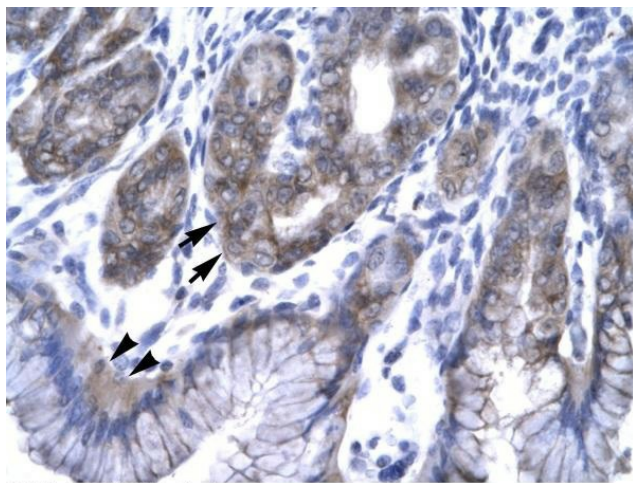
WB Suggested Anti-EAP30 Antibody Titration: 5.0ug/ml; Positive Control: HepG2 cell lysate SNF8 is supported by BioGPS gene expression data to be expressed in HepG2



Human Spleen



Human Heart



Rabbit Anti-EAP30 Antibody; Paraffin Embedded Tissue: Human Stomach; Cellular Data: Epithelial cells of Fundic Gland and Surface Mucous Cells; Antibody Concentration: 4.0-8.0 ug/ml; Magnification: 400X