

Product datasheet for **TA329320**

PMF1 Rabbit Polyclonal Antibody

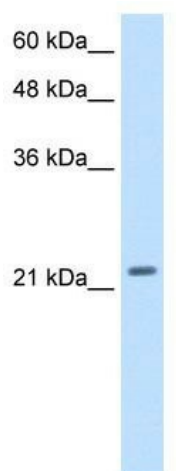
Product data:

Product Type:	Primary Antibodies
Applications:	WB
Recommended Dilution:	WB
Reactivity:	Human
Host:	Rabbit
Isotype:	IgG
Clonality:	Polyclonal
Immunogen:	The immunogen for anti-PMF1 antibody: synthetic peptide directed towards the middle region of human PMF1. Synthetic peptide located within the following region: AAGSYQRFTDCYKCFYQLQPAMTQQIYDKFIAQLQTSIREEISDIKEEGN
Formulation:	Liquid. Purified antibody supplied in 1x PBS buffer with 0.09% (w/v) sodium azide and 2% sucrose. <i>Note that this product is shipped as lyophilized powder to China customers.</i>
Conjugation:	Unconjugated
Storage:	Store at -20°C as received.
Stability:	Stable for 12 months from date of receipt.
Predicted Protein Size:	23 kDa
Gene Name:	polyamine-modulated factor 1
Database Link:	NP_009152 Entrez Gene 11243 Human Q6P1K2
Background:	PMF1 is part of the MIS12 complex which is required for normal chromosome alignment and segregation and kinetochore formation during mitosis. It may act as a cotranscription partner of NFE2L2 involved in regulation of polyamine-induced transcription of SSAT.
Synonyms:	Est1p-like protein B (EST1B); OTTHUMP00000016581; polyamine-modulated factor 1
Note:	Immunogen sequence homology: Goat: 100%; Human: 100%; Rat: 93%; Mouse: 93%; Pig: 92%; Horse: 92%; Guinea pig: 86%; Bovine: 85%; Rabbit: 79%; Dog: 77%
Protein Families:	Stem cell - Pluripotency



[View online »](#)

Product images:



WB Suggested Anti-PMF1 Antibody Titration:
2.5ug/ml; ELISA Titer: 1:312500; Positive Control:
Transfected 293T