

Product datasheet for **TA329315**

Prdm4 Rabbit Polyclonal Antibody

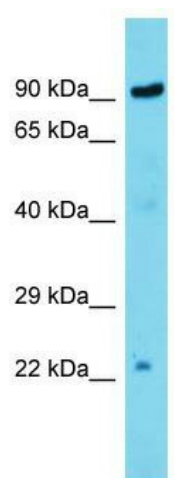
Product data:

Product Type:	Primary Antibodies
Applications:	WB
Recommended Dilution:	WB
Reactivity:	Mouse
Host:	Rabbit
Isotype:	IgG
Clonality:	Polyclonal
Immunogen:	The immunogen for Anti-Prdm4 antibody is: synthetic peptide directed towards the C-terminal region of Mouse Prdm4. Synthetic peptide located within the following region: HLKTCKEPSSSSSAQEEDDESEEDLADSMRTEDCRMGSAYYSTDESLS
Formulation:	Liquid. Purified antibody supplied in 1x PBS buffer with 0.09% (w/v) sodium azide and 2% sucrose. <i>Note that this product is shipped as lyophilized powder to China customers.</i>
Conjugation:	Unconjugated
Storage:	Store at -20°C as received.
Stability:	Stable for 12 months from date of receipt.
Predicted Protein Size:	88 kDa
Gene Name:	PR domain containing 4
Database Link:	NP_857633 Entrez Gene 72843 Mouse Q80V63
Background:	Prdm4 may function as a transcription factor involved in cell differentiation.
Synonyms:	MGC45046; PFM1
Note:	Immunogen sequence homology: Rat: 100%; Human: 100%; Rabbit: 100%; Dog: 93%; Horse: 93%; Pig: 92%; Mouse: 92%; Yeast: 92%; Bovine: 92%



[View online »](#)

Product images:



Host: Rabbit; Target Name: Prdm4; Sample
Tissue: Mouse Liver lysates; Antibody Dilution:
1.0ug/ml