

Product datasheet for **TA329314**

SALF (STON1-GTF2A1L) Rabbit Polyclonal Antibody

Product data:

Product Type:	Primary Antibodies
Applications:	WB
Recommended Dilution:	WB
Reactivity:	Human
Host:	Rabbit
Isotype:	IgG
Clonality:	Polyclonal
Immunogen:	The immunogen for anti-SALF antibody: synthetic peptide directed towards the C terminal of human SALF. Synthetic peptide located within the following region: NSGDDVSEQDVPDLFDTDNVIVCQYDKIHRSKNKWKFYLKDGVMCFGGRD
Formulation:	Liquid. Purified antibody supplied in 1x PBS buffer with 0.09% (w/v) sodium azide and 2% sucrose. <i>Note that this product is shipped as lyophilized powder to China customers.</i>
Conjugation:	Unconjugated
Storage:	Store at -20°C as received.
Stability:	Stable for 12 months from date of receipt.
Predicted Protein Size:	132 kDa
Gene Name:	STON1-GTF2A1L readthrough
Database Link:	NP_758515 Entrez Gene 286749 Human Q9Y6Q2
Background:	The SALF mRNA is an infrequent but naturally occurring co-transcribed product of the neighboring SBLF and ALF genes. This rare transcript encodes a fusion protein composed of greater than 95% each of the individual elements, stoned B-like factor (SBLF) and TFIIA-alpha/beta-like factor (ALF). The significance of this co-transcribed mRNA and the function of its protein product have not yet been determined.
Synonyms:	SALF

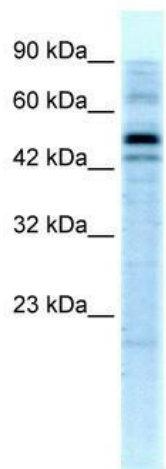


[View online »](#)

Note: Immunogen sequence homology: Dog: 100%; Pig: 100%; Rat: 100%; Human: 100%; Mouse: 100%; Bovine: 100%; Rabbit: 100%; Guinea pig: 100%; Horse: 86%; Zebrafish: 79%

Protein Families: Transcription Factors

Product images:



WB Suggested Anti-SALF Antibody Titration:
5.0ug/ml; ELISA Titer: 1:62500; Positive Control:
HepG2 cell lysate