

## Product datasheet for **TA329312**

### MRG15 (MORF4L1) Rabbit Polyclonal Antibody

#### Product data:

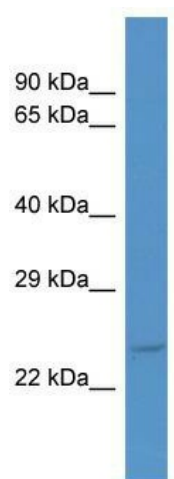
Product Type:	Primary Antibodies
Applications:	WB
Recommended Dilution:	WB
Reactivity:	Human
Host:	Rabbit
Isotype:	IgG
Clonality:	Polyclonal
Immunogen:	The immunogen for Anti-MORF4L1 antibody is: synthetic peptide directed towards the C-terminal region of Human MORF4L1. Synthetic peptide located within the following region: FNVMLGTQLLYKFERPQYAEILADHPDAPMSQVYGAPHLRLRFVRIGAML
Formulation:	Liquid. Purified antibody supplied in 1x PBS buffer with 0.09% (w/v) sodium azide and 2% sucrose. <i>Note that this product is shipped as lyophilized powder to China customers.</i>
Purification:	Affinity Purified
Conjugation:	Unconjugated
Storage:	Store at -20°C as received.
Stability:	Stable for 12 months from date of receipt.
Predicted Protein Size:	25 kDa
Gene Name:	mortality factor 4 like 1
Database Link:	<a href="#">NP_996670</a> <a href="#">Entrez Gene 10933 Human</a> <a href="#">Q9UBU8</a>
Background:	MORF4L1 is a novel chromodomain protein that is present in two distinct multiprotein complexes involved in transcriptional activation.
Synonyms:	Eaf3; FWP006; HsT17725; MEAF3; MORFRG15; MRG15; S863-6
Note:	Immunogen sequence homology: Dog: 100%; Pig: 100%; Rat: 100%; Horse: 100%; Human: 100%; Mouse: 100%; Bovine: 100%; Rabbit: 100%; Zebrafish: 100%; Guinea pig: 100%



[View online »](#)

Protein Families: Transcription Factors

**Product images:**



Host: Rabbit; Target Name: MORF4L1; Sample  
Tissue: COLO205 Whole cell lysates; Antibody  
Dilution: 1.0ug/ml