

Product datasheet for **TA329310**

ZNF274 Rabbit Polyclonal Antibody

Product data:

Product Type:	Primary Antibodies
Applications:	IHC, WB
Recommended Dilution:	WB, IHC
Reactivity:	Human
Host:	Rabbit
Isotype:	IgG
Clonality:	Polyclonal
Immunogen:	The immunogen for anti-ZNF274 antibody: synthetic peptide directed towards the N terminal of human ZNF274. Synthetic peptide located within the following region: YPELQLDPKLDPLPAESPLMNIEVVEVLTNLNQEAVAGPRNAQIQALYAEDG
Formulation:	Liquid. Purified antibody supplied in 1x PBS buffer with 0.09% (w/v) sodium azide and 2% sucrose. <i>Note that this product is shipped as lyophilized powder to China customers.</i>
Conjugation:	Unconjugated
Storage:	Store at -20°C as received.
Stability:	Stable for 12 months from date of receipt.
Predicted Protein Size:	62 kDa
Gene Name:	zinc finger protein 274
Database Link:	NP_598009 Entrez Gene 10782 Human Q96GC6
Background:	ZNF274 is a zinc finger protein containing five C2H2-type zinc finger domains, one or two Kruppel-associated box A (KRAB A) domains, and a leucine-rich domain. The protein has been suggested to be a transcriptional repressor. It localizes predominantly to the nucleolus. This gene encodes a zinc finger protein containing five C2H2-type zinc finger domains, one or two Kruppel-associated box A (KRAB A) domains, and a leucine-rich domain. The encoded protein has been suggested to be a transcriptional repressor. It localizes predominantly to the nucleolus. Alternatively spliced transcript variants encoding different isoforms exist. These variants utilize alternative polyadenylation signals.



[View online »](#)

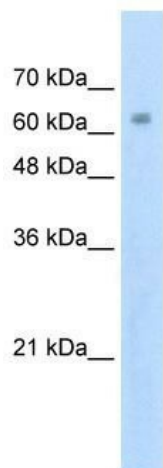
Synonyms: HFB101; ZF2; ZKSCAN19; ZSCAN51

Note: Immunogen sequence homology: Human: 100%; Rabbit: 100%; Dog: 93%; Bovine: 93%; Pig: 86%; Rat: 86%; Mouse: 86%

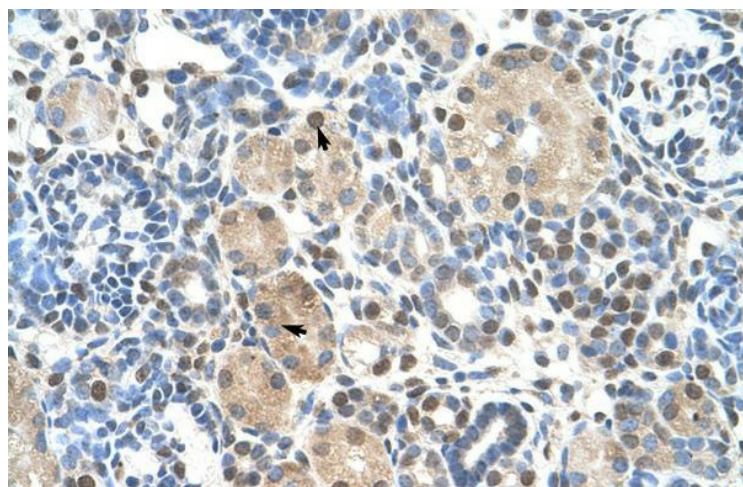
Protein Families: Transcription Factors

Protein Pathways: Neurotrophin signaling pathway

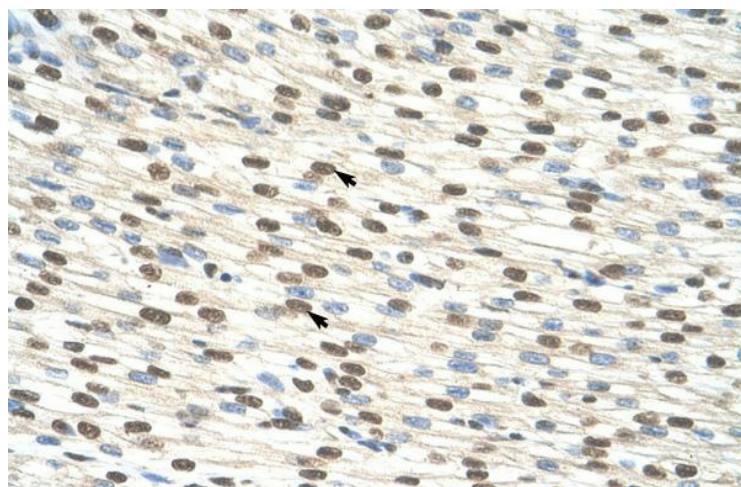
Product images:



WB Suggested Anti-ZNF274 Antibody Titration: 2.5ug/ml; ELISA Titer: 1:312500; Positive Control: Jurkat cell lysate



Human kidney



Human Heart