

Product datasheet for **TA329309**

TCFL5 Rabbit Polyclonal Antibody

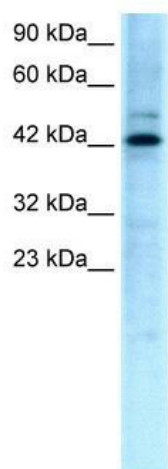
Product data:

Product Type:	Primary Antibodies
Applications:	IHC, WB
Recommended Dilution:	WB, IHC
Reactivity:	Human
Host:	Rabbit
Isotype:	IgG
Clonality:	Polyclonal
Immunogen:	The immunogen for anti-TCFL5 antibody: synthetic peptide directed towards the middle region of human TCFL5. Synthetic peptide located within the following region: TLIRHPSELMNVPLQQQNKCTALVKNKTAATTTALQFTYPLFTTNACSTS
Formulation:	Liquid. Purified antibody supplied in 1x PBS buffer with 0.09% (w/v) sodium azide and 2% sucrose. <i>Note that this product is shipped as lyophilized powder to China customers.</i>
Conjugation:	Unconjugated
Storage:	Store at -20°C as received.
Stability:	Stable for 12 months from date of receipt.
Predicted Protein Size:	53 kDa
Gene Name:	transcription factor like 5
Database Link:	NP_006593 Entrez Gene 10732 Human Q9UL49
Background:	TCFL5 is a new bHLH transcription factor that negatively regulates upstream transcription factor-dependent transcription.
Synonyms:	bHLHe82; CHA; E2BP-1; Figlb; SOSF1
Note:	Immunogen sequence homology: Human: 100%; Rat: 93%; Mouse: 93%; Dog: 86%; Pig: 86%; Horse: 86%; Bovine: 86%; Guinea pig: 86%
Protein Families:	Druggable Genome, Transcription Factors

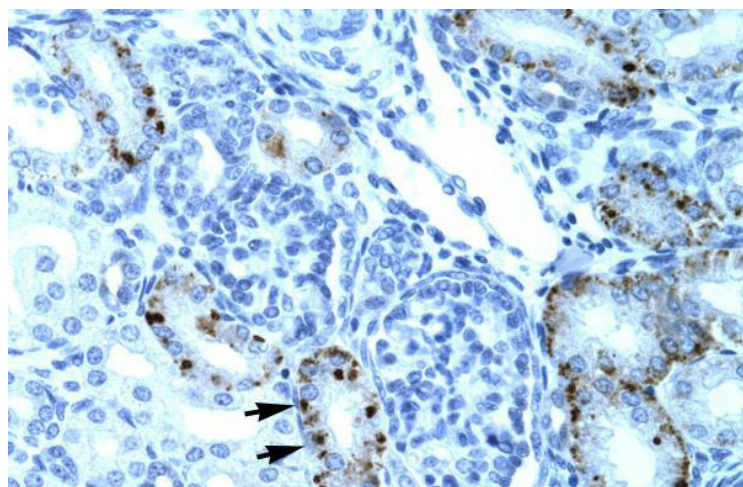


[View online »](#)

Product images:



WB Suggested Anti-TCFL5 Antibody Titration: 0.2-1 ug/ml; ELISA Titer: 1:312500; Positive Control: HepG2 cell lysate. TCFL5 is supported by BioGPS gene expression data to be expressed in HepG2



Human kidney