

Product datasheet for **TA329307**

KLF1 Rabbit Polyclonal Antibody

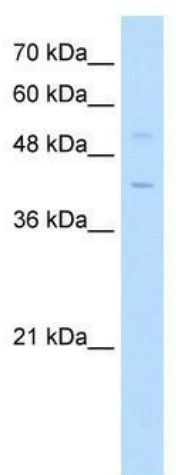
Product data:

Product Type:	Primary Antibodies
Applications:	WB
Recommended Dilution:	WB
Reactivity:	Human
Host:	Rabbit
Isotype:	IgG
Clonality:	Polyclonal
Immunogen:	The immunogen for anti-KLF1 antibody: synthetic peptide directed towards the middle region of human KLF1. Synthetic peptide located within the following region: PKALALQPVYPGPGAGSSGGYFRTGLSVPAASGAPYGLLSGYPAMYAP
Formulation:	Liquid. Purified antibody supplied in 1x PBS buffer with 0.09% (w/v) sodium azide and 2% sucrose. <i>Note that this product is shipped as lyophilized powder to China customers.</i>
Conjugation:	Unconjugated
Storage:	Store at -20°C as received.
Stability:	Stable for 12 months from date of receipt.
Predicted Protein Size:	38 kDa
Gene Name:	Kruppel-like factor 1 (erythroid)
Database Link:	NP_006554 Entrez Gene 10661 Human Q13351
Background:	KLF1 is a transcription factor, originally identified in this laboratory, which plays a crucial role as a transcriptional activator at the adult beta-globin locus.
Synonyms:	CDAN4; EKLF; HBFQTL6; INLU
Note:	Immunogen sequence homology: Human: 100%; Bovine: 93%; Rat: 92%; Mouse: 92%; Dog: 85%; Pig: 85%
Protein Families:	Transcription Factors



[View online »](#)

Product images:



WB Suggested Anti-KLF1 Antibody Titration: 0.2-1 ug/ml; ELISA Titer: 1:1562500; Positive Control: Jurkat cell lysate