

## Product datasheet for **TA329306**

### Taf6l Rabbit Polyclonal Antibody

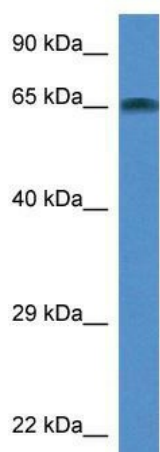
#### Product data:

Product Type:	Primary Antibodies
Applications:	WB
Recommended Dilution:	WB
Reactivity:	Rat
Host:	Rabbit
Isotype:	IgG
Clonality:	Polyclonal
Immunogen:	The immunogen for anti-Taf6l antibody: synthetic peptide corresponding to a region of Rat. Synthetic peptide located within the following region: PQLMKVALQDLQTNISKIAALLPYFVYVSGVKSVSHDLEQLHRLQVARS
Formulation:	Liquid. Purified antibody supplied in 1x PBS buffer with 0.09% (w/v) sodium azide and 2% sucrose. <i>Note that this product is shipped as lyophilized powder to China customers.</i>
Conjugation:	Unconjugated
Storage:	Store at -20°C as received.
Stability:	Stable for 12 months from date of receipt.
Predicted Protein Size:	68 kDa
Gene Name:	TATA-box binding protein associated factor 6 like
Database Link:	<a href="#">NP_001101045</a> <a href="#">Entrez Gene 309194 Rat</a>
Background:	The function of this protein remains unknown.
Synonyms:	FLJ11136; MGC4288; PAF65-alpha; PAF65A
Note:	Immunogen sequence homology: Pig: 100%; Rat: 100%; Human: 100%; Mouse: 100%; Rabbit: 100%; Guinea pig: 100%; Dog: 92%; Horse: 92%; Bovine: 85%; Zebrafish: 85%



[View online »](#)

Product images:



WB Suggested Anti-Taf6l Antibody; Titration: 1.0 ug/ml; Positive Control: Rat Brain