

Product datasheet for **TA329302**

SLC30A9 Rabbit Polyclonal Antibody

Product data:

Product Type:	Primary Antibodies
Applications:	IHC, WB
Recommended Dilution:	WB, IHC
Reactivity:	Human
Host:	Rabbit
Isotype:	IgG
Clonality:	Polyclonal
Immunogen:	The immunogen for anti-SLC30A9 antibody: synthetic peptide directed towards the N terminal of human SLC30A9. Synthetic peptide located within the following region: LKQEPLQVRVKAVLKKREYGSKYTQNNFITGVRAINEFCLKSSDLEQLR
Formulation:	Liquid. Purified antibody supplied in 1x PBS buffer with 0.09% (w/v) sodium azide and 2% sucrose.
Conjugation:	Unconjugated
Storage:	Store at -20°C as received.
Stability:	Stable for 12 months from date of receipt.
Predicted Protein Size:	63 kDa
Gene Name:	solute carrier family 30 member 9
Database Link:	NP_006336 Entrez Gene 10463 Human Q6PML9
Background:	The gene corresponding to embryonic lung protein [also known as Solute carrier family 30 (Zinc transporter), member 9, SLC30A9], is likely to be an evolutionarily conserved, housekeeping gene that plays a role intimately linked with cellular replication, DNA synthesis and/or transcriptional regulation.
Synonyms:	C4orf1; GAC63; HUEL; ZNT9
Note:	Immunogen sequence homology: Dog: 100%; Pig: 100%; Rat: 100%; Horse: 100%; Human: 100%; Bovine: 100%; Rabbit: 100%; Guinea pig: 100%; Mouse: 93%; Zebrafish: 85%
Protein Families:	Transcription Factors, Transmembrane

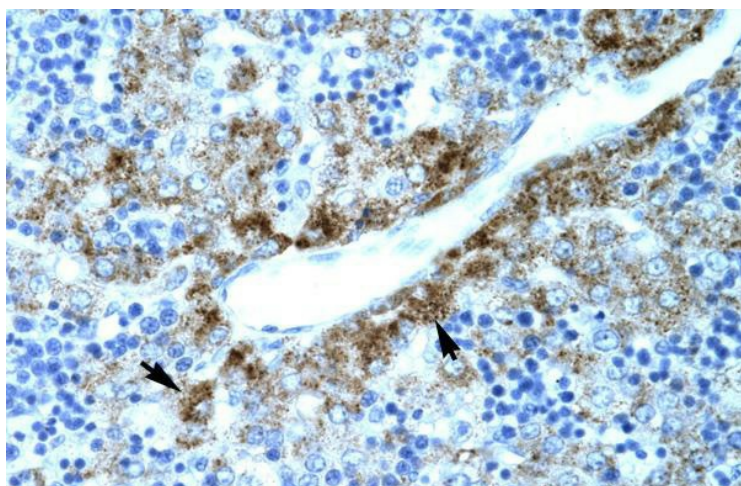


[View online »](#)

Product images:



WB Suggested Anti-SLC30A9 Antibody Titration:
0.2-1 ug/ml; ELISA Titer: 1:62500; Positive Control:
HepG2 cell lysate



Human Liver