

Product datasheet for **TA329300**

Ikaros (IKZF1) Rabbit Polyclonal Antibody

Product data:

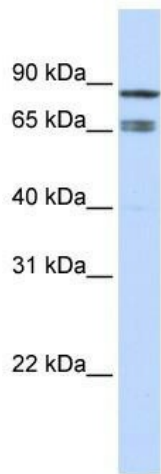
Product Type:	Primary Antibodies
Applications:	WB
Recommended Dilution:	WB
Reactivity:	Human
Host:	Rabbit
Isotype:	IgG
Clonality:	Polyclonal
Immunogen:	The immunogen for anti-IKZF1 antibody: synthetic peptide directed towards the middle region of human IKZF1. Synthetic peptide located within the following region: DLCKIGSERSLVLDRLASNVAKRKSSMPQKFLGDKGLSDTPYDSSASYEK
Formulation:	Liquid. Purified antibody supplied in 1x PBS buffer with 0.09% (w/v) sodium azide and 2% sucrose. <i>Note that this product is shipped as lyophilized powder to China customers.</i>
Conjugation:	Unconjugated
Storage:	Store at -20°C as received.
Stability:	Stable for 12 months from date of receipt.
Predicted Protein Size:	57 kDa
Gene Name:	IKAROS family zinc finger 1
Database Link:	NP_006051 Entrez Gene 10320 Human Q13422
Background:	IKZF1 binds and activates the enhancer (delta-A element) of the CD3-delta gene. It functions in the specification and the maturation of the T-lymphocyte. It also interacts with a critical control element in the TDT (terminal deoxynucleotidyltransferase) promoter as well as with the promoters for other genes expressed during early stages of B- and T-cell development.
Synonyms:	Hs.54452; IK1; IKAROS; LyF-1; LYF1; PPP1R92; PRO0758; ZNFN1A1
Note:	Immunogen sequence homology: Horse: 100%; Human: 100%; Dog: 93%; Pig: 93%; Rat: 93%; Mouse: 93%; Guinea pig: 93%; Bovine: 92%; Rabbit: 92%



[View online »](#)

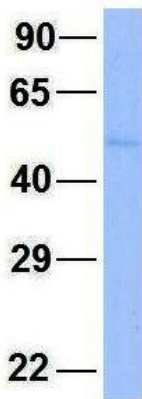
Protein Families: Druggable Genome, Transcription Factors

Product images:



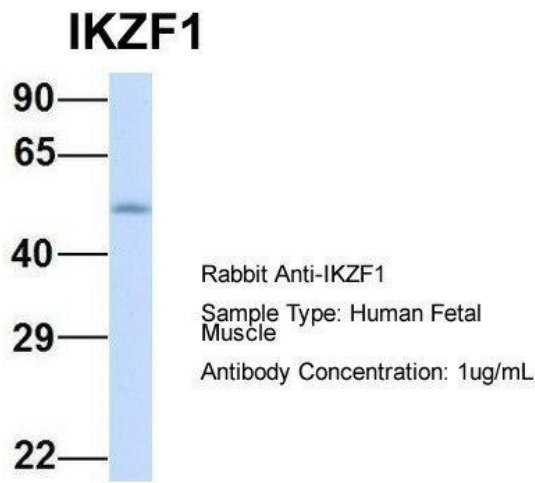
WB Suggested Anti-IKZF1 Antibody Titration: 0.2-1 ug/ml; ELISA Titer: 1:312500; Positive Control: Hela cell lysate

IKZF1

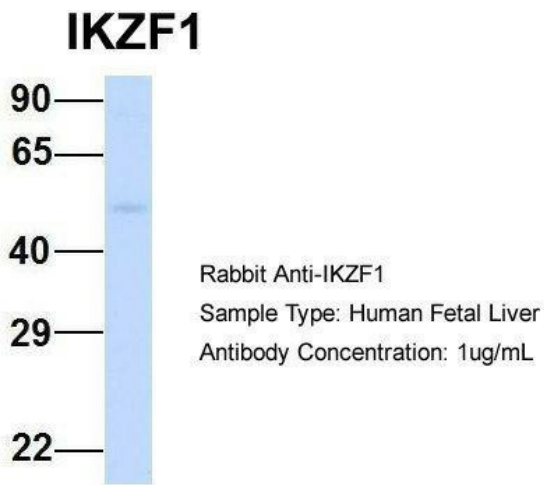


Rabbit Anti-IKZF1
 Sample Type: Human Adult Placenta
 Antibody Concentration: 1ug/mL

2Hum. Adult Placenta; Host: Rabbit; Target Name: CHAD; Sample Tissue: Human Adult Placenta; Antibody Dilution: 1.0ug/ml



Host: Rabbit; Target Name: IKZF1; Sample Tissue: Human Fetal Muscle; Antibody Dilution: 1.0ug/ml



Host: Rabbit; Target Name: IKZF1; Sample Tissue: Human Fetal Liver; Antibody Dilution: 1.0ug/ml