

## Product datasheet for **TA329299**

### SAP18 Rabbit Polyclonal Antibody

#### Product data:

Product Type:	Primary Antibodies
Applications:	WB
Recommended Dilution:	WB
Reactivity:	Human
Host:	Rabbit
Isotype:	IgG
Clonality:	Polyclonal
Immunogen:	The immunogen for Anti-SAP18 antibody is: synthetic peptide directed towards the N-terminal region of Human SAP18. Synthetic peptide located within the following region: ESRVTQEEIKKEPEKPIDREKTCPLLLRVFTTNGRHHRMDEFSGNVPS
Formulation:	Liquid. Purified antibody supplied in 1x PBS buffer with 0.09% (w/v) sodium azide and 2% sucrose. <i>Note that this product is shipped as lyophilized powder to China customers.</i>
Purification:	Affinity Purified
Conjugation:	Unconjugated
Storage:	Store at -20°C as received.
Stability:	Stable for 12 months from date of receipt.
Predicted Protein Size:	16 kDa
Gene Name:	Sin3A associated protein 18kDa
Database Link:	<a href="#">NP_005861</a> <a href="#">Entrez Gene 10284 Human</a> <a href="#">O00422</a>
Background:	Histone acetylation plays a key role in the regulation of eukaryotic gene expression. Histone acetylation and deacetylation are catalyzed by multisubunit complexes. SAP18 is a component of the histone deacetylase complex, which includes SIN3, SAP30, HDAC1, HDAC2, RbAp46, RbAp48, and other polypeptides. This protein directly interacts with SIN3 and enhances SIN3-mediated transcriptional repression when tethered to the promoter.
Synonyms:	2HOR0202; SAP18P

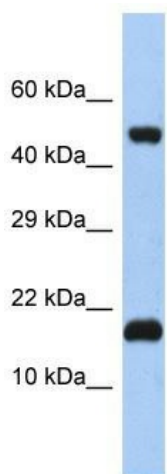


[View online »](#)

**Note:** Immunogen sequence homology: Dog: 100%; Pig: 100%; Rat: 100%; Horse: 100%; Human: 100%; Mouse: 100%; Bovine: 100%; Rabbit: 100%; Guinea pig: 100%; Zebrafish: 93%

**Protein Families:** Druggable Genome, Transcription Factors

### Product images:



Host: Rabbit

Target Name: SAP18

Sample Tissue: Fetal Brain Lysate

Antibody Dilution: 1.0 $\mu$ g/ml

Host: Rabbit; Target Name: SAP18; Sample Tissue: Fetal Brain lysates; Antibody Dilution: 1.0 $\mu$ g/ml