

Product datasheet for **TA329297**

OLIG2 Rabbit Polyclonal Antibody

Product data:

Product Type:	Primary Antibodies
Applications:	IHC, WB
Recommended Dilution:	WB, IHC
Reactivity:	Human, Mouse
Host:	Rabbit
Isotype:	IgG
Clonality:	Polyclonal
Immunogen:	The immunogen for anti-OLIG2 antibody: synthetic peptide directed towards the N terminal of human OLIG2. Synthetic peptide located within the following region: MDSDSLVSRRPSSPEPDDLFLPARSKGSSGSAFTGGTVSSSTPSPDCPPE
Formulation:	Liquid. Purified antibody supplied in 1x PBS buffer with 0.09% (w/v) sodium azide and 2% sucrose. <i>Note that this product is shipped as lyophilized powder to China customers.</i>
Conjugation:	Unconjugated
Storage:	Store at -20°C as received.
Stability:	Stable for 12 months from date of receipt.
Predicted Protein Size:	32 kDa
Gene Name:	oligodendrocyte lineage transcription factor 2
Database Link:	NP_005797 Entrez Gene 50913 Mouse Entrez Gene 10215 Human Q13516



[View online »](#)

Background:

OLIG2 is a basic helix-loop-helix transcription factor which is expressed in oligodendroglial tumors of the brain. OLIG2 is an essential regulator of ventral neuroectodermal progenitor cell fate. It is associated with T-cell acute lymphoblastic leukemia due to a chromosomal translocation t(14;21)(q11.2;q22). OLIG2 might play a role in learning deficits associated with Down syndrome. This gene encodes a basic helix-loop-helix transcription factor which is expressed in oligodendroglial tumors of the brain. The protein is an essential regulator of ventral neuroectodermal progenitor cell fate. The gene is involved in a chromosomal translocation t(14;21)(q11.2;q22) associated with T-cell acute lymphoblastic leukemia. Its chromosomal location is within a region of chromosome 21 which has been suggested to play a role in learning deficits associated with Down syndrome. Publication Note: This RefSeq record includes a subset of the publications that are available for this gene. Please see the Entrez Gene record to access additional publications.

Synonyms:

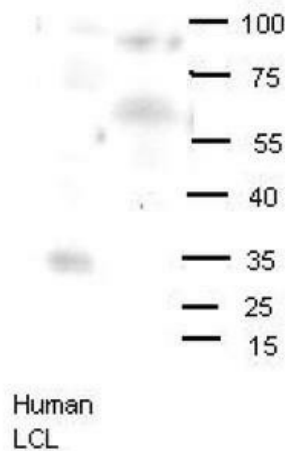
BHLHB1; bHLHe19; OLIGO2; PRKCBP2; RACK17

Note:

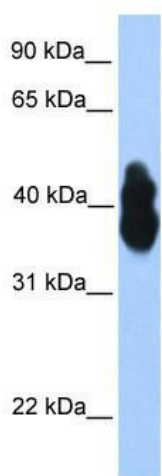
Immunogen sequence homology: Dog: 100%; Pig: 100%; Rat: 100%; Horse: 100%; Human: 100%; Mouse: 100%; Guinea pig: 100%; Zebrafish: 85%

Protein Families:

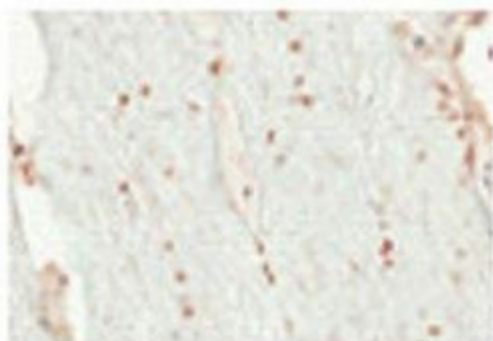
Druggable Genome, Transcription Factors

Product images:

OLIG2 antibody - N-terminal region validated by WB using human LCL and mouse brains at 1:1000.



WB Suggested Anti-OLIG2 Antibody Titration: 0.2-1 ug/ml; ELISA Titer: 1:62500; Positive Control: Transfected 293T



Sample Type: Human Optic Nerve and Spinal Cord
Cellular Target: Oligodendrocyte Lineage Cells; Dilution: 1:500