

Product datasheet for **TA329296**

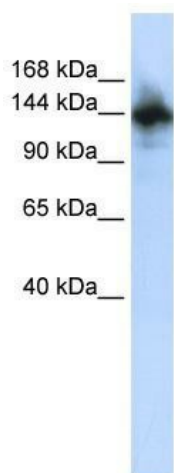
RBM6 Rabbit Polyclonal Antibody

Product data:

Product Type:	Primary Antibodies
Applications:	WB
Recommended Dilution:	WB
Reactivity:	Human
Host:	Rabbit
Isotype:	IgG
Clonality:	Polyclonal
Immunogen:	The immunogen for anti-RBM6 antibody: synthetic peptide directed towards the N terminal of human RBM6. Synthetic peptide located within the following region: RNRDVSDLDFRDKDGTQVDFRGRGSGTTDLDFRDRDTPHSDFRGRHSRT
Formulation:	Liquid. Purified antibody supplied in 1x PBS buffer with 0.09% (w/v) sodium azide and 2% sucrose.
Conjugation:	Unconjugated
Storage:	Store at -20°C as received.
Stability:	Stable for 12 months from date of receipt.
Predicted Protein Size:	129 kDa
Gene Name:	RNA binding motif protein 6
Database Link:	NP_005768 Entrez Gene 10180 Human P78332
Background:	RBM6 contains 1 G-patch domain and 1 RRM (RNA recognition motif) domain. It specifically binds poly(G) RNA homopolymers in vitro.
Synonyms:	3G2; DEF-3; DEF3; g16; HLC-11; NY-LU-12
Note:	Immunogen sequence homology: Dog: 100%; Pig: 100%; Horse: 100%; Human: 100%; Mouse: 100%; Bovine: 100%; Rat: 93%; Guinea pig: 93%; Rabbit: 86%



[View online »](#)

Product images:

WB Suggested Anti-RBM6 Antibody Titration: 0.2-1 ug/ml; ELISA Titer: 1:312500; Positive Control: HepG2 cell lysate. RBM6 is supported by BioGPS gene expression data to be expressed in HepG2