

## Product datasheet for **TA329293**

### TSFM Rabbit Polyclonal Antibody

#### Product data:

Product Type:	Primary Antibodies
Applications:	WB
Recommended Dilution:	WB
Reactivity:	Human
Host:	Rabbit
Isotype:	IgG
Clonality:	Polyclonal
Immunogen:	The immunogen for anti-TSFM antibody: synthetic peptide directed towards the middle region of human TSFM. Synthetic peptide located within the following region: GTMMHCQTLKDQPSAYSKGFLNSSELSGLPAGPDREGSLKDQLALAIGKL
Formulation:	Liquid. Purified antibody supplied in 1x PBS buffer with 0.09% (w/v) sodium azide and 2% sucrose. <i>Note that this product is shipped as lyophilized powder to China customers.</i>
Conjugation:	Unconjugated
Storage:	Store at -20°C as received.
Stability:	Stable for 12 months from date of receipt.
Predicted Protein Size:	38 kDa
Gene Name:	Ts translation elongation factor, mitochondrial
Database Link:	<a href="#">NP_005717</a> <a href="#">Entrez Gene 10102 Human</a> <a href="#">P43897</a>



[View online »](#)

**Background:**

The TSFM protein is a mitochondrial translation elongation factor. Synthesis of the 13 mitochondrial-encoded proteins occurs on a dedicated mitochondrial translation apparatus similar to that found in prokaryotes and requires, in addition to the tRNAs and rRNAs encoded in mtDNA, the concerted action of several translation factors and a large number of mitochondrial ribosomal proteins, all of which are encoded by nuclear genes. Synthesis of the 13 mitochondrial-encoded proteins occurs on a dedicated mitochondrial translation apparatus similar to that found in prokaryotes and requires, in addition to the tRNAs and rRNAs encoded in mtDNA, the concerted action of several translation factors and a large number of mitochondrial ribosomal proteins, all of which are encoded by nuclear genes. The TSFM gene encodes a mitochondrial translation elongation factor (Smeitink et al., 2006 [PubMed 17033963]). [supplied by OMIM]

**Synonyms:**

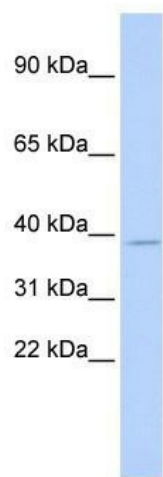
EFTS; EFTSMT

**Note:**

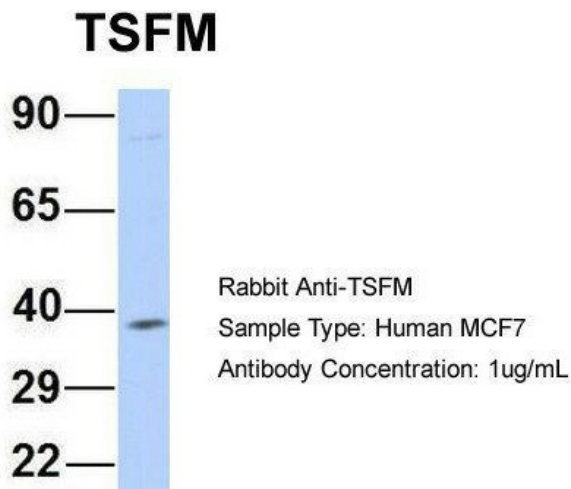
Immunogen sequence homology: Human: 100%; Rat: 93%; Rabbit: 93%; Pig: 86%; Mouse: 86%; Bovine: 86%; Guinea pig: 86%

**Protein Families:**

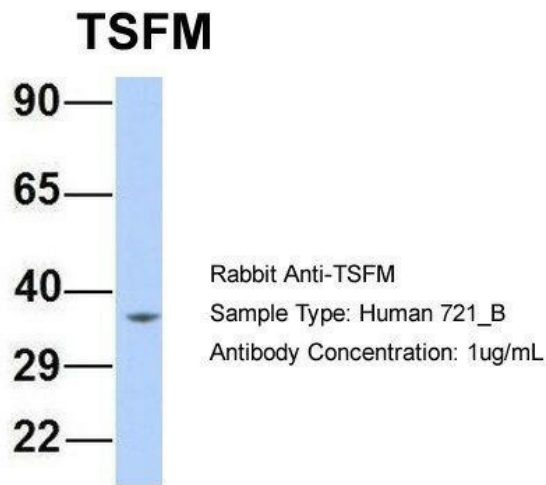
Transcription Factors

**Product images:**

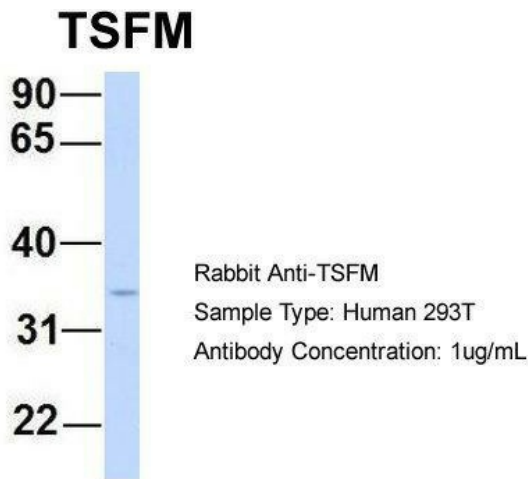
WB Suggested Anti-TSFM Antibody Titration: 0.2-1 ug/ml; ELISA Titer: 1:312500; Positive Control: HeLa cell lysate. TSFM is strongly supported by BioGPS gene expression data to be expressed in HeLa



Host: Rabbit; Target Name: TSFM; Sample Tissue: Human MCF7; Antibody Dilution: 1.0ug/ml; TSFM is strongly supported by BioGPS gene expression data to be expressed in MCF7



Host: Rabbit; Target Name: TSFM; Sample Tissue: Human 721\_B; Antibody Dilution: 1.0ug/ml; TSFM is strongly supported by BioGPS gene expression data to be expressed in Human 721\_B cells



Host: Rabbit; Target Name: TSFM; Sample Tissue: Human 293T; Antibody Dilution: 1.0ug/ml; There is BioGPS gene expression data showing that TSFM is expressed in HEK293T