

Product datasheet for TA329292

PQBP1 Rabbit Polyclonal Antibody

Product data:

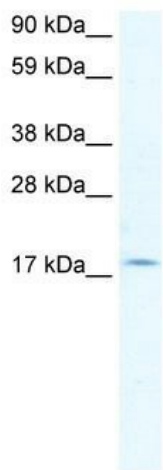
Product Type:	Primary Antibodies
Applications:	IHC, WB
Recommended Dilution:	WB, IHC
Reactivity:	Human
Host:	Rabbit
Isotype:	IgG
Clonality:	Polyclonal
Immunogen:	The immunogen for anti-PQBP1 antibody: synthetic peptide directed towards the middle region of human PQBP1. Synthetic peptide located within the following region: PSCGLPYYWNADREEGKERRHHRREELAPYPKSKKAVSRKDEELDPM DPS
Formulation:	Liquid. Purified antibody supplied in 1x PBS buffer with 0.09% (w/v) sodium azide and 2% sucrose. <i>Note that this product is shipped as lyophilized powder to China customers.</i>
Conjugation:	Unconjugated
Storage:	Store at -20°C as received.
Stability:	Stable for 12 months from date of receipt.
Predicted Protein Size:	30 kDa
Gene Name:	polyglutamine binding protein 1
Database Link:	NP_005701 Entrez Gene 10084 Human O60828
Background:	PQBP1 is a nuclear polyglutamine-binding protein that contains a WW domain. Mutations in this gene are associated with X-linked mental retardation.
Synonyms:	MRX2; MRX55; MRXS3; MRXS8; NPW38; RENS1; SHS
Note:	Immunogen sequence homology: Human: 100%; Dog: 93%; Pig: 93%; Rat: 93%; Horse: 93%; Bovine: 93%; Mouse: 86%; Rabbit: 86%; Guinea pig: 86%
Protein Families:	Transcription Factors



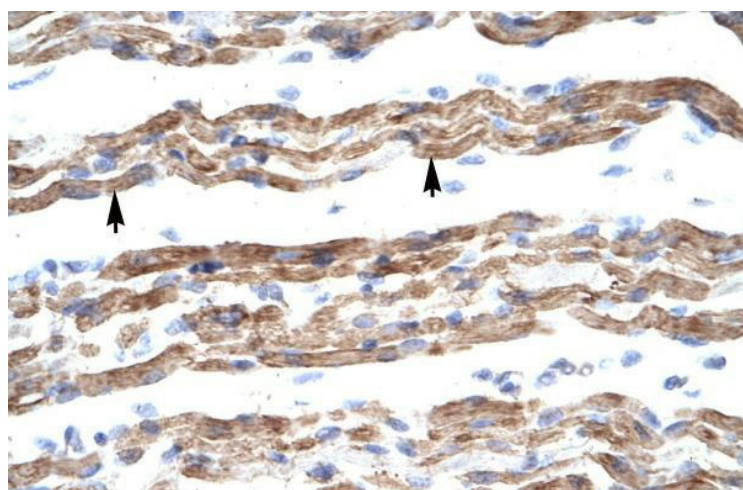
[View online »](#)

Protein Pathways: Spliceosome

Product images:



WB Suggested Anti-PQBP1 Antibody Titration: 2.5ug/ml; ELISA Titer: 1:312500; Positive Control: Human Lung



Human Muscle