

Product datasheet for **TA329291**

THRAP5 (MED16) Rabbit Polyclonal Antibody

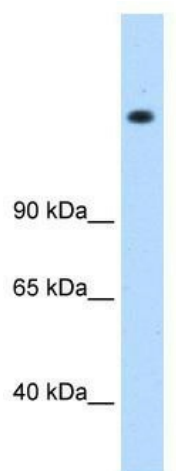
Product data:

Product Type:	Primary Antibodies
Applications:	WB
Recommended Dilution:	WB
Reactivity:	Human
Host:	Rabbit
Isotype:	IgG
Clonality:	Polyclonal
Immunogen:	The immunogen for anti-MED16 antibody: synthetic peptide directed towards the N terminal of human MED16. Synthetic peptide located within the following region: FGGKPMEGWIAVTVSGLVTVSLLKPSGQVLTSTESLCRLRGRVALADIAF
Formulation:	Liquid. Purified antibody supplied in 1x PBS buffer with 0.09% (w/v) sodium azide and 2% sucrose. <i>Note that this product is shipped as lyophilized powder to China customers.</i>
Conjugation:	Unconjugated
Storage:	Store at -20°C as received.
Stability:	Stable for 12 months from date of receipt.
Predicted Protein Size:	97 kDa
Gene Name:	mediator complex subunit 16
Database Link:	NP_005472 Entrez Gene 10025 Human Q9Y2X0
Background:	THRAP5 is part of the human thyroid hormone receptor-associated protein (TRAP)-Mediator family which acts as a coactivator for a broad range of nuclear hormone receptors as well as other classes of transcriptional activators.
Synonyms:	DRIP92; THRAP5; TRAP95
Note:	Immunogen sequence homology: Dog: 100%; Pig: 100%; Rat: 100%; Horse: 100%; Human: 100%; Mouse: 100%; Bovine: 100%; Guinea pig: 100%
Protein Families:	Druggable Genome, Transcription Factors



[View online »](#)

Product images:



WB Suggested Anti-MED16 Antibody Titration:
0.2-1 ug/ml; ELISA Titer: 1:312500; Positive
Control: 721_B cell lysate MED16 is strongly
supported by BioGPS gene expression data to be
expressed in Human 721_B cells