

Product datasheet for **TA329287**

Hex (HHEX) Rabbit Polyclonal Antibody

Product data:

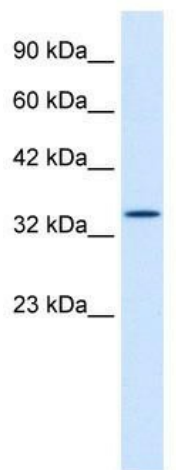
| | |
|-------------------------|--|
| Product Type: | Primary Antibodies |
| Applications: | IHC, WB |
| Recommended Dilution: | WB, IHC |
| Reactivity: | Human |
| Host: | Rabbit |
| Isotype: | IgG |
| Clonality: | Polyclonal |
| Immunogen: | The immunogen for anti-HHEX antibody: synthetic peptide directed towards the middle region of human HHEX. Synthetic peptide located within the following region: KQENPQSNKKEELESLSLSSCDQRQDLPSEQNKGASLDSSQCSPSPASQED |
| Formulation: | Liquid. Purified antibody supplied in 1x PBS buffer with 0.09% (w/v) sodium azide and 2% sucrose. <i>Note that this product is shipped as lyophilized powder to China customers.</i> |
| Conjugation: | Unconjugated |
| Storage: | Store at -20°C as received. |
| Stability: | Stable for 12 months from date of receipt. |
| Predicted Protein Size: | 30 kDa |
| Gene Name: | hematopoietically expressed homeobox |
| Database Link: | NP_002720 Entrez Gene 3087 Human Q03014 |
| Background: | HHEX encodes a member of the homeobox family of transcription factors, many of which are involved in developmental processes. Expression in specific hematopoietic lineages suggests that this protein may play a role in hematopoietic differentiation. |
| Synonyms: | HEX; HMPH; HOX11L-PEN; PRH; PRHX |
| Note: | Immunogen sequence homology: Dog: 100%; Rat: 100%; Horse: 100%; Human: 100%; Pig: 93%; Bovine: 93%; Guinea pig: 93%; Mouse: 79% |
| Protein Families: | Druggable Genome, Transcription Factors |



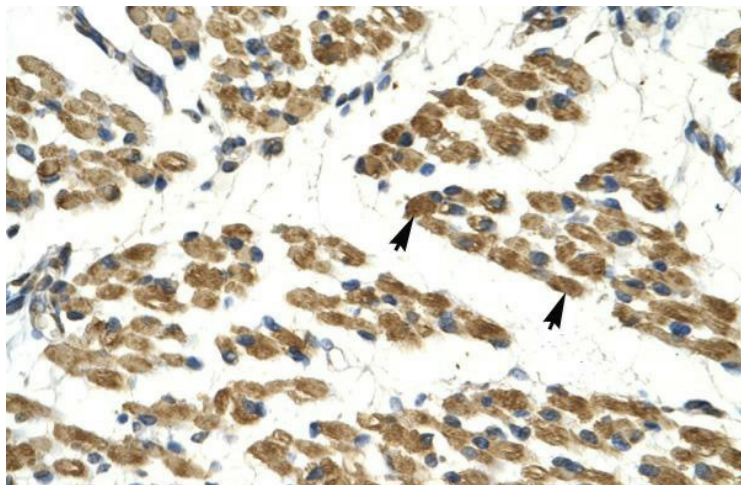
[View online »](#)

Protein Pathways: Maturity onset diabetes of the young

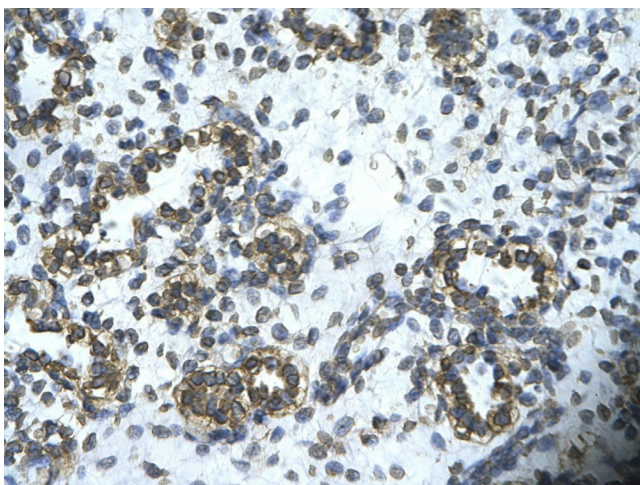
Product images:



WB Suggested Anti-HHEX Antibody Titration: 0.2-1 ug/ml; ELISA Titer: 1:312500; Positive Control: K562 cell lysate. HHEX is strongly supported by BioGPS gene expression data to be expressed in Human K562 cells



Human Muscle



Rabbit Anti-HHEX Antibody; Paraffin Embedded
Tissue: Human alveolar cell; Cellular Data:
Epithelial cells of renal tubule; Antibody
Concentration: 4.0-8.0 ug/ml; Magnification: 400X