

## Product datasheet for **TA329286**

### GTF2H3 Rabbit Polyclonal Antibody

#### Product data:

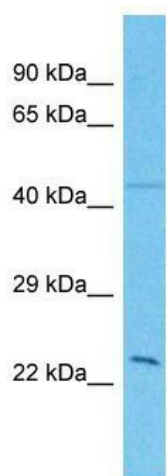
Product Type:	Primary Antibodies
Applications:	WB
Recommended Dilution:	WB
Reactivity:	Human
Host:	Rabbit
Isotype:	IgG
Clonality:	Polyclonal
Immunogen:	The immunogen for Anti-GTF2H3 antibody is: synthetic peptide directed towards the middle region of Human GTF2H3. Synthetic peptide located within the following region: KGQHTETLLAGSLAKALCYIHRMNKEVKDNQEMKSRILVIKAAEDSALQY
Formulation:	Liquid. Purified antibody supplied in 1x PBS buffer with 0.09% (w/v) sodium azide and 2% sucrose. <i>Note that this product is shipped as lyophilized powder to China customers.</i>
Purification:	Affinity Purified
Conjugation:	Unconjugated
Storage:	Store at -20°C as received.
Stability:	Stable for 12 months from date of receipt.
Predicted Protein Size:	22 kDa
Gene Name:	general transcription factor IIH subunit 3
Database Link:	<a href="#">NP_001507</a> <a href="#">Entrez Gene 2967 Human Q13889</a>
Background:	The function of this protein remains unknown.
Synonyms:	BTF2; P34; TFB4; TFIIH
Note:	Immunogen sequence homology: Pig: 100%; Rat: 100%; Horse: 100%; Human: 100%; Bovine: 100%; Rabbit: 100%; Guinea pig: 100%; Mouse: 86%
Protein Families:	Druggable Genome, Transcription Factors



[View online »](#)

Protein Pathways: Basal transcription factors, Nucleotide excision repair

### Product images:



Host: Rabbit; Target Name: GTF2H3; Sample  
Tissue: Ovary Tumor lysates; Antibody Dilution:  
1.0ug/ml