

Product datasheet for **TA329284**

TFIIF (GTF2F2) Rabbit Polyclonal Antibody

Product data:

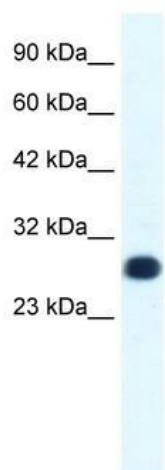
Product Type:	Primary Antibodies
Applications:	IHC, WB
Recommended Dilution:	WB, IHC
Reactivity:	Human, Mouse
Host:	Rabbit
Isotype:	IgG
Clonality:	Polyclonal
Immunogen:	The immunogen for anti-GTF2F2 antibody: synthetic peptide directed towards the middle region of human GTF2F2. Synthetic peptide located within the following region: IEESKPVRLSQLDKVVTTNYKPVANHQYNIEYERKKKEDGKRARADKQ
Formulation:	Liquid. Purified antibody supplied in 1x PBS buffer with 0.09% (w/v) sodium azide and 2% sucrose. <i>Note that this product is shipped as lyophilized powder to China customers.</i>
Conjugation:	Unconjugated
Storage:	Store at -20°C as received.
Stability:	Stable for 12 months from date of receipt.
Predicted Protein Size:	28 kDa
Gene Name:	general transcription factor IIF subunit 2
Database Link:	NP_004119 Entrez Gene 68705 Mouse Entrez Gene 2963 Human P13984
Background:	GTF2F2 synergizes with HIV-1 Tat and the cellular coactivator Tat-SF1 during Tat-mediated transactivation of the HIV-1 LTR promoter.
Synonyms:	BTF4; RAP30; TF2F2; TFIIF
Note:	Immunogen sequence homology: Dog: 100%; Pig: 100%; Rat: 100%; Horse: 100%; Human: 100%; Mouse: 100%; Bovine: 100%; Rabbit: 100%; Guinea pig: 100%; Zebrafish: 77%
Protein Families:	Transcription Factors



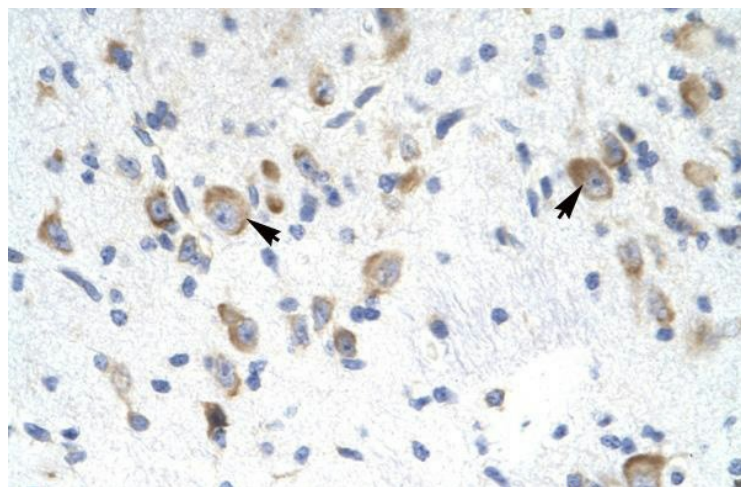
[View online »](#)

Protein Pathways: Basal transcription factors

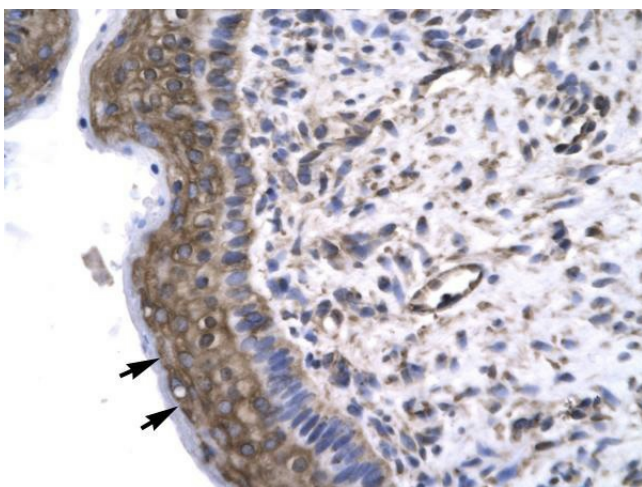
Product images:



WB Suggested Anti-GTF2F2 Antibody Titration: 1.0ug/ml; Positive Control: HepG2 cell lysate



Rabbit Anti-GTF2F2 Antibody; Paraffin Embedded Tissue: Human Brain; Cellular Data: Neural Cells; Antibody Concentration: 4.0-8.0 ug/ml; Magnification: 400X



Rabbit Anti-GTF2F2 Antibody; Paraffin Embedded Tissue: Human Spermatophore; Cellular Data: Epithelial cells; Antibody Concentration: 4.0-8.0 ug/ml; Magnification: 400X