

## Product datasheet for **TA329281**

### TFIIE beta (GTF2E2) Rabbit Polyclonal Antibody

#### Product data:

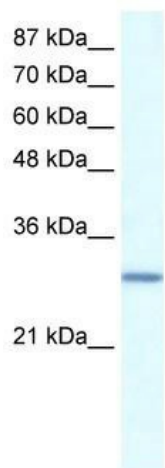
Product Type:	Primary Antibodies
Applications:	IHC, WB
Recommended Dilution:	WB
Reactivity:	Human
Host:	Rabbit
Isotype:	IgG
Clonality:	Polyclonal
Immunogen:	The immunogen for anti-GTF2E2 antibody: synthetic peptide directed towards the N terminal of human GTF2E2. Synthetic peptide located within the following region: VEHGGSSGSKQNSDHSNGSFNLKALSGSSGYKFGVLAKIVNYMKTRHQRG
Formulation:	Liquid. Purified antibody supplied in 1x PBS buffer with 0.09% (w/v) sodium azide and 2% sucrose. <i>Note that this product is shipped as lyophilized powder to China customers.</i>
Conjugation:	Unconjugated
Storage:	Store at -20°C as received.
Stability:	Stable for 12 months from date of receipt.
Predicted Protein Size:	33 kDa
Gene Name:	general transcription factor IIE subunit 2
Database Link:	<a href="#">NP_002086</a> <a href="#">Entrez Gene 2961 Human P29084</a>
Background:	Recruits TFIH to the initiation complex and stimulates the RNA polymerase II C-terminal domain kinase and DNA-dependent ATPase activities of TFIH. Both TFIH and TFIIE are required for promoter clearance by RNA polymerase.
Synonyms:	FE; TF2E2; TFIIE-B
Note:	Immunogen sequence homology: Dog: 100%; Pig: 100%; Rat: 100%; Horse: 100%; Human: 100%; Bovine: 100%; Rabbit: 100%; Guinea pig: 100%; Mouse: 93%; Zebrafish: 85%; Goat: 79%
Protein Families:	Transcription Factors



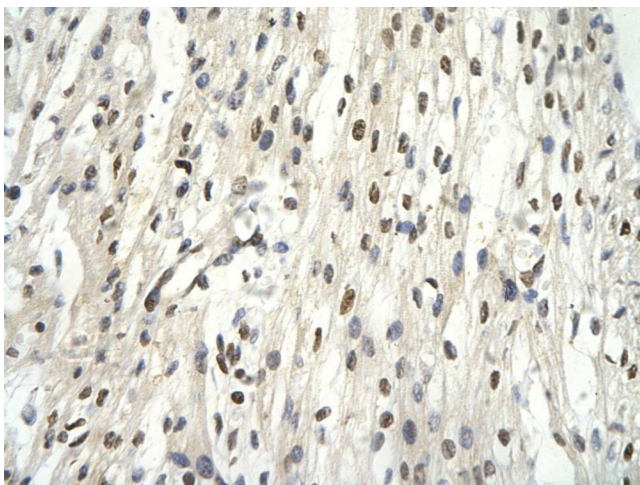
[View online »](#)

Protein Pathways: Basal transcription factors

### Product images:



WB Suggested Anti-GTF2E2 Antibody Titration: 0.2-1 ug/ml; ELISA Titer: 1:312500; Positive Control: Daudi cell lysate. GTF2E2 is supported by BioGPS gene expression data to be expressed in Daudi



Rabbit Anti-GTF2E2 Antibody; Paraffin Embedded Tissue: Human cardiac cell; Cellular Data: Epithelial cells of renal tubule; Antibody Concentration: 4.0-8.0 ug/ml; Magnification: 400X