

Product datasheet for **TA329280**

POU6F1 Rabbit Polyclonal Antibody

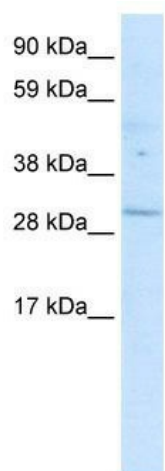
Product data:

| | |
|-------------------------|---|
| Product Type: | Primary Antibodies |
| Applications: | IHC, WB |
| Recommended Dilution: | WB, IHC |
| Reactivity: | Human |
| Host: | Rabbit |
| Isotype: | IgG |
| Clonality: | Polyclonal |
| Immunogen: | The immunogen for anti-POU6F1 antibody: synthetic peptide directed towards the middle region of human POU6F1. Synthetic peptide located within the following region: YFEKNPLPTGQEITEIAKELNYDREVVVRVWFCNRRQTLKNTSKLNVFQIP |
| Formulation: | Liquid. Purified antibody supplied in 1x PBS buffer with 0.09% (w/v) sodium azide and 2% sucrose. <i>Note that this product is shipped as lyophilized powder to China customers.</i> |
| Conjugation: | Unconjugated |
| Storage: | Store at -20°C as received. |
| Stability: | Stable for 12 months from date of receipt. |
| Predicted Protein Size: | 33 kDa |
| Gene Name: | POU class 6 homeobox 1 |
| Database Link: | NP_002693 Entrez Gene 5463 Human Q14863 |
| Background: | The POU6F1 gene encodes a protein that is part of a family of transcription factors which exhibit distinct temporal and spatial patterns of expression. |
| Synonyms: | BRN5; MPOU; TCFB1 |
| Note: | Immunogen sequence homology: Dog: 100%; Rat: 100%; Horse: 100%; Human: 100%; Mouse: 100%; Bovine: 100%; Rabbit: 100%; Zebrafish: 92% |
| Protein Families: | Transcription Factors |

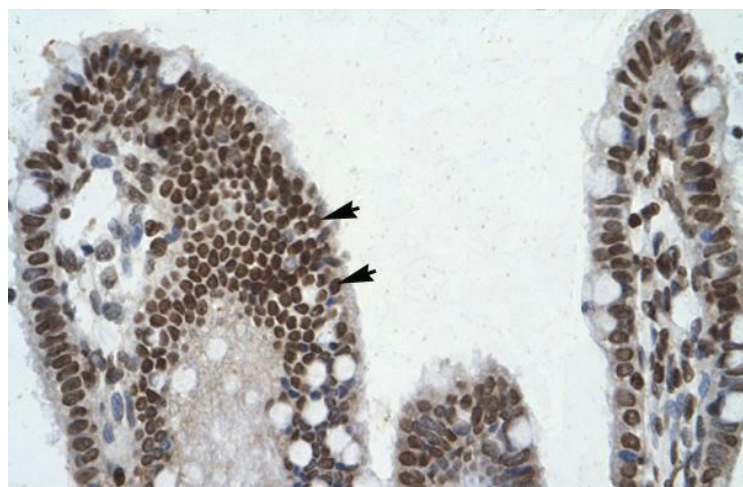


[View online »](#)

Product images:



WB Suggested Anti-POU6F1 Antibody Titration:
0.12ug/ml; ELISA Titer: 1:312500; Positive Control:
Human kidney nuclear extract



Human Intestine