

Product datasheet for **TA329277**

TAF10 Rabbit Polyclonal Antibody

Product data:

Product Type:	Primary Antibodies
Applications:	WB
Recommended Dilution:	WB
Reactivity:	Human, Mouse
Host:	Rabbit
Isotype:	IgG
Clonality:	Polyclonal
Immunogen:	The immunogen for anti-TAF10 antibody: synthetic peptide directed towards the C terminal of human TAF10. Synthetic peptide located within the following region: DALQHCKMKGTASGSSRSKSKDRKYLTMEDLTPALSEYGINVKKPHYFT
Formulation:	Liquid. Purified antibody supplied in 1x PBS buffer with 0.09% (w/v) sodium azide and 2% sucrose. <i>Note that this product is shipped as lyophilized powder to China customers.</i>
Conjugation:	Unconjugated
Storage:	Store at -20°C as received.
Stability:	Stable for 12 months from date of receipt.
Predicted Protein Size:	22 kDa
Gene Name:	TATA-box binding protein associated factor 10
Database Link:	NP_006275 Entrez Gene 24075 Mouse Entrez Gene 6881 Human Q12962
Background:	TAFs may participate in basal transcription, serve as coactivators, function in promoter recognition or modify general transcription factors (GTFs) to facilitate complex assembly and transcription initiation. TAF10 is one of the small subunits of TFIID that is associated with a subset of TFIID complexes. It is required for transcriptional activation by the estrogen receptor, for progression through the cell cycle, and may also be required for certain cellular differentiation programs.
Synonyms:	TAF2A; TAF2H; TAFII30



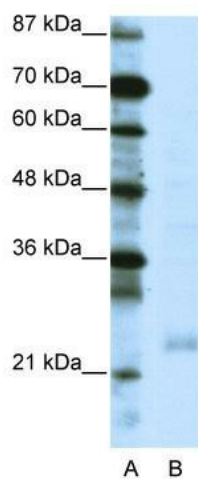
[View online »](#)

Note: Immunogen sequence homology: Dog: 100%; Pig: 100%; Rat: 100%; Horse: 100%; Human: 100%; Mouse: 100%; Bovine: 100%; Rabbit: 100%; Zebrafish: 100%; Guinea pig: 100%

Protein Families: Druggable Genome, Transcription Factors

Protein Pathways: Basal transcription factors

Product images:



WB Suggested Anti-TAF10 Antibody Titration: 0.2-1 ug/ml; ELISA Titer: 1:1562500; Positive Control: Jurkat cell lysate