

Product datasheet for **TA329275**

SPIB Rabbit Polyclonal Antibody

Product data:

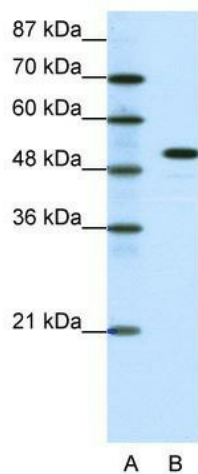
Product Type:	Primary Antibodies
Applications:	WB
Recommended Dilution:	WB
Reactivity:	Human
Host:	Rabbit
Isotype:	IgG
Clonality:	Polyclonal
Immunogen:	The immunogen for anti-SPIB antibody: synthetic peptide directed towards the C terminal of human SPIB. Synthetic peptide located within the following region: GQQKGNRKRMTYQKLARALRNYAKTGEIRKVKRKLTYQFDSALLPAVRR
Formulation:	Liquid. Purified antibody supplied in 1x PBS buffer with 0.09% (w/v) sodium azide and 2% sucrose. <i>Note that this product is shipped as lyophilized powder to China customers.</i>
Conjugation:	Unconjugated
Storage:	Store at -20°C as received.
Stability:	Stable for 12 months from date of receipt.
Predicted Protein Size:	19 kDa
Gene Name:	Spi-B transcription factor
Database Link:	NP_003112 Entrez Gene 6689 Human Q01892
Background:	SPI1 (MIM 165170) and SPIB are members of a subfamily of ETS (see ETS1; MIM 164720) transcription factors. ETS proteins share a conserved ETS domain that mediates specific DNA binding. SPIB and SPI1 bind to a purine-rich sequence, the PU box (5-prime-GAGGAA-3-prime).
Synonyms:	SPI-B
Note:	Immunogen sequence homology: Dog: 100%; Pig: 100%; Rat: 100%; Horse: 100%; Human: 100%; Mouse: 100%; Bovine: 100%; Rabbit: 100%; Zebrafish: 100%; Guinea pig: 100%



[View online »](#)

Protein Families: Transcription Factors

Product images:



WB Suggested Anti-SPIB Antibody Titration: 0.2-1 ug/ml; ELISA Titer: 1:62500; Positive Control: Daudi cell lysate SPIB is supported by BioGPS gene expression data to be expressed in Daudi