

## Product datasheet for **TA329274**

### SPI1 Rabbit Polyclonal Antibody

#### Product data:

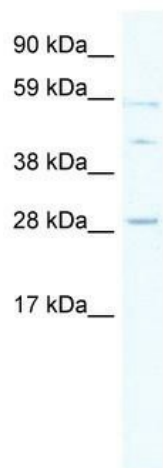
Product Type:	Primary Antibodies
Applications:	WB
Recommended Dilution:	WB
Reactivity:	Human
Host:	Rabbit
Isotype:	IgG
Clonality:	Polyclonal
Immunogen:	The immunogen for anti-SPI1 antibody: synthetic peptide directed towards the middle region of human SPI1. Synthetic peptide located within the following region: HPSLGHQVSYLPRMCLQYPSLSPAQPSSDEEEGERQSPPLEVSDGEADGL
Formulation:	Liquid. Purified antibody supplied in 1x PBS buffer with 0.09% (w/v) sodium azide and 2% sucrose. <i>Note that this product is shipped as lyophilized powder to China customers.</i>
Conjugation:	Unconjugated
Storage:	Store at -20°C as received.
Stability:	Stable for 12 months from date of receipt.
Predicted Protein Size:	30 kDa
Gene Name:	Spi-1 proto-oncogene
Database Link:	<a href="#">NP_003111</a> <a href="#">Entrez Gene 6688 Human P17947</a>
Background:	SPI1 is known to collaborate with multiple transcription factors and to regulate expression of immunoglobulin genes. Lack of SPI1 expression is associated with defective immunoglobulin transcription in Hodgkin and Reed-Sternberg cells of classical Hodgkin disease
Synonyms:	OF; PU.1; SFPI1; SPI-1; SPI-A
Note:	Immunogen sequence homology: Dog: 100%; Pig: 100%; Rat: 100%; Human: 100%; Horse: 93%; Bovine: 93%; Guinea pig: 93%; Mouse: 92%
Protein Families:	Transcription Factors



[View online »](#)

Protein Pathways: Acute myeloid leukemia, Pathways in cancer

### Product images:



WB Suggested Anti-SPI1 Antibody Titration: 0.2-1 ug/ml; ELISA Titer: 1:62500; Positive Control: Human Thymus