

Product datasheet for **TA329273**

SPI1 Rabbit Polyclonal Antibody

Product data:

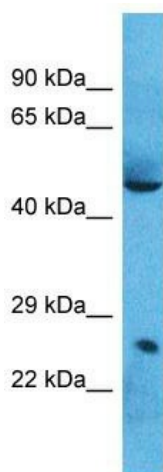
Product Type:	Primary Antibodies
Applications:	WB
Recommended Dilution:	WB
Reactivity:	Human
Host:	Rabbit
Isotype:	IgG
Clonality:	Polyclonal
Immunogen:	The immunogen for Anti-SPI1 antibody is: synthetic peptide directed towards the N-terminal region of Human SPI1. Synthetic peptide located within the following region: MEGFPLVPPPSLDLPYDTDLYQRQTHEYYPYLSSDGHSDHYWDFHPH
Formulation:	Liquid. Purified antibody supplied in 1x PBS buffer with 0.09% (w/v) sodium azide and 2% sucrose. <i>Note that this product is shipped as lyophilized powder to China customers.</i>
Purification:	Affinity Purified
Conjugation:	Unconjugated
Storage:	Store at -20°C as received.
Stability:	Stable for 12 months from date of receipt.
Predicted Protein Size:	26 kDa
Gene Name:	Spi-1 proto-oncogene
Database Link:	NP_003111 Entrez Gene 6688 Human P17947
Background:	The function of this protein remains unknown.
Synonyms:	OF; PU.1; SFPI1; SPI-1; SPI-A
Note:	Immunogen sequence homology: Dog: 100%; Pig: 100%; Horse: 100%; Human: 100%; Bovine: 100%; Rabbit: 100%; Rat: 77%; Guinea pig: 77%
Protein Families:	Transcription Factors



[View online »](#)

Protein Pathways: Acute myeloid leukemia, Pathways in cancer

Product images:



Host: Rabbit
Target Name: SPI1
Sample Tissue: Lung Tumor Lysate
Antibody Dilution: 1.0 μ g/ml

Host: Rabbit; Target Name: SPI1; Sample Tissue: Lung Tumor lysates; Antibody Dilution: 1.0 μ g/ml