

Product datasheet for **TA329272**

Pit1 (POU1F1) Rabbit Polyclonal Antibody

Product data:

Product Type:	Primary Antibodies
Applications:	IHC, WB
Recommended Dilution:	IHC, WB
Reactivity:	Human
Host:	Rabbit
Isotype:	IgG
Clonality:	Polyclonal
Immunogen:	The immunogen for anti-POU1F1 antibody: synthetic peptide directed towards the C terminal of human POU1F1. Synthetic peptide located within the following region: QEIMRMAEELNLEKEVVRVWFCNRRQREKRVKTSLNQSLFSISKEHLECR
Formulation:	Liquid. Purified antibody supplied in 1x PBS buffer with 0.09% (w/v) sodium azide and 2% sucrose.
Conjugation:	Unconjugated
Storage:	Store at -20°C as received.
Stability:	Stable for 12 months from date of receipt.
Predicted Protein Size:	33 kDa
Gene Name:	POU class 1 homeobox 1
Database Link:	NP_000297 Entrez Gene 5449 Human P28069
Background:	PIT1 is a pituitary-specific transcription factor responsible for pituitary development and hormone expression in mammals and is a member of the POU family of transcription factors that regulate mammalian development. The POU family is so named because the first 3 members identified were PIT1 and OCT1 of mammals, and Unc-86 of <i>C. elegans</i> . PIT1 contains 2 protein domains, termed POU-specific and POU-homeo, which are both necessary for high affinity DNA binding on genes encoding growth hormone and prolactin. PIT1 is also important for regulation of the genes encoding prolactin and thyroid-stimulating hormone beta subunit by thyrotropin-releasing hormone and cyclic AMP.



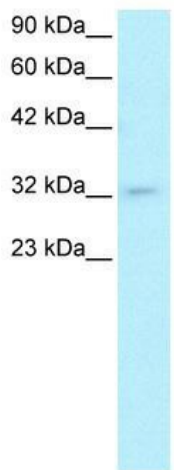
[View online »](#)

Synonyms: CPHD1; GHF-1; Pit-1; PIT1; POU1F1a

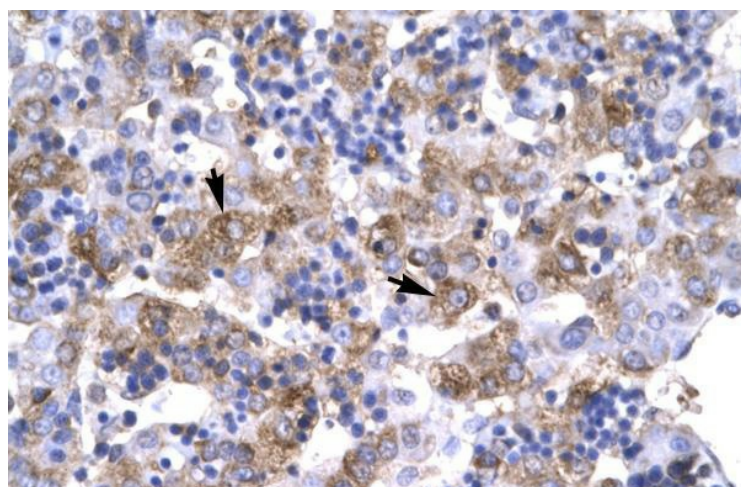
Note: Immunogen sequence homology: Dog: 100%; Pig: 100%; Rat: 100%; Goat: 100%; Horse: 100%; Human: 100%; Mouse: 100%; Sheep: 100%; Bovine: 100%; Rabbit: 100%; Guinea pig: 100%; Zebrafish: 86%

Protein Families: Druggable Genome, Transcription Factors

Product images:



WB Suggested Anti-POU1F1 Antibody Titration: 0.2-1 ug/ml; ELISA Titer: 1:12500; Positive Control: HepG2 cell lysate



Rabbit Anti-POU1F1 Antibody; Paraffin Embedded Tissue: Human Liver; Cellular Data: Hepatocyte; Antibody Concentration: 4.0-8.0 ug/ml; Magnification: 400X