

## Product datasheet for **TA329268**

### Myf5 Rabbit Polyclonal Antibody

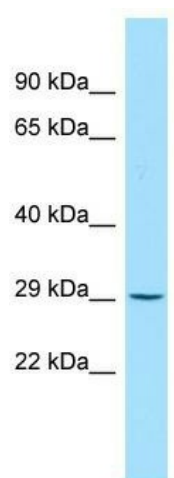
#### Product data:

Product Type:	Primary Antibodies
Applications:	WB
Recommended Dilution:	WB
Reactivity:	Rat
Host:	Rabbit
Isotype:	IgG
Clonality:	Polyclonal
Immunogen:	The immunogen for Anti-Myf5 antibody is: synthetic peptide directed towards the middle region of Rat Myf5. Synthetic peptide located within the following region: DEEHVRAPTGHQAGHCLMWACKACKRKSTMDRRKAATMRERRRLKKVN
Formulation:	Liquid. Purified antibody supplied in 1x PBS buffer with 0.09% (w/v) sodium azide and 2% sucrose. <i>Note that this product is shipped as lyophilized powder to China customers.</i>
Conjugation:	Unconjugated
Storage:	Store at -20°C as received.
Stability:	Stable for 12 months from date of receipt.
Predicted Protein Size:	28 kDa
Gene Name:	myogenic factor 5
Database Link:	<a href="#">NP_001100253</a> <a href="#">Entrez Gene 299766 Rat</a>
Background:	The function of this protein remains unknown.
Synonyms:	bHLHc2; Myf-5
Note:	Immunogen sequence homology: Pig: 100%; Rat: 100%; Goat: 100%; Horse: 100%; Human: 100%; Mouse: 100%; Sheep: 100%; Bovine: 100%; Rabbit: 100%; Guinea pig: 100%; Dog: 93%; Zebrafish: 93%



[View online »](#)

## Product images:



Host: Rabbit; Target Name: Myf5; Sample Tissue: Rat Pancreas lysates; Antibody Dilution: 1.0ug/ml