

Product datasheet for TA329267

MYF5 Rabbit Polyclonal Antibody

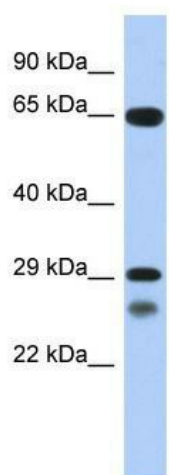
Product data:

Product Type:	Primary Antibodies
Applications:	WB
Recommended Dilution:	WB
Reactivity:	Human
Host:	Rabbit
Isotype:	IgG
Clonality:	Polyclonal
Immunogen:	The immunogen for anti-MYF5 antibody: synthetic peptide directed towards the C terminal of human MYF5. Synthetic peptide located within the following region: LSSLDCLSNIVDRITSSEQPLQLDLASLSPVASTDSQPATPGASSRL
Formulation:	Liquid. Purified antibody supplied in 1x PBS buffer with 0.09% (w/v) sodium azide and 2% sucrose. <i>Note that this product is shipped as lyophilized powder to China customers.</i>
Conjugation:	Unconjugated
Storage:	Store at -20°C as received.
Stability:	Stable for 12 months from date of receipt.
Predicted Protein Size:	28 kDa
Gene Name:	myogenic factor 5
Database Link:	NP_005584 Entrez Gene 4617 Human P13349
Background:	MYF5 is a member of the myogenic basic helix-loop-helix family of transcription factors, which can activate the muscle differentiation program.
Synonyms:	bHLHc2
Note:	Immunogen sequence homology: Pig: 93%; Goat: 93%; Horse: 93%; Human: 93%; Bovine: 93%; Rabbit: 93%; Guinea pig: 93%; Dog: 92%; Rat: 85%
Protein Families:	Druggable Genome, Transcription Factors



[View online »](#)

Product images:



WB Suggested Anti-MYF5 Antibody Titration: 0.2-1 ug/ml; ELISA Titer: 1:312500; Positive Control: Human Placenta