

Product datasheet for **TA329264**

mtTFA (TFAM) Rabbit Polyclonal Antibody

Product data:

Product Type:	Primary Antibodies
Applications:	WB
Recommended Dilution:	WB
Reactivity:	Human, Mouse
Host:	Rabbit
Isotype:	IgG
Clonality:	Polyclonal
Immunogen:	The immunogen for anti-TFAM antibody: synthetic peptide directed towards the N terminal of human TFAM. Synthetic peptide located within the following region: AKTTELIRRIAQRWRELPDSKKKIYQDAYRAEWQVYKEEISRFKEQLTPS
Formulation:	Liquid. Purified antibody supplied in 1x PBS buffer with 0.09% (w/v) sodium azide and 2% sucrose. <i>Note that this product is shipped as lyophilized powder to China customers.</i>
Conjugation:	Unconjugated
Storage:	Store at -20°C as received.
Stability:	Stable for 12 months from date of receipt.
Predicted Protein Size:	29 kDa
Gene Name:	transcription factor A, mitochondrial
Database Link:	NP_003192 Entrez Gene 21780 Mouse Entrez Gene 7019 Human Q00059
Background:	The function remains unknown. This gene encodes a mitochondrial transcription factor that is a key activator of mitochondrial transcription as well as a participant in mitochondrial genome replication. Studies in mice have demonstrated that this gene product is required to regulate the mitochondrial genome copy number and is essential for embryonic development. A mouse model for Kearns-Sayre syndrome was produced when expression of this gene was eliminated by targeted disruption in heart and muscle cells.
Synonyms:	MTTF1; MTTFA; TCF6; TCF6L1; TCF6L2; TCF6L3



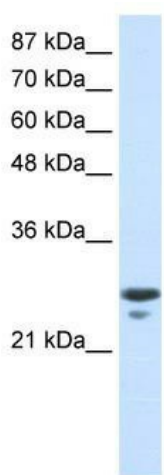
[View online »](#)

Note: Immunogen sequence homology: Human: 100%; Pig: 92%; Horse: 92%; Bovine: 92%; Dog: 83%; Rabbit: 83%; Mouse: 75%; Guinea pig: 75%

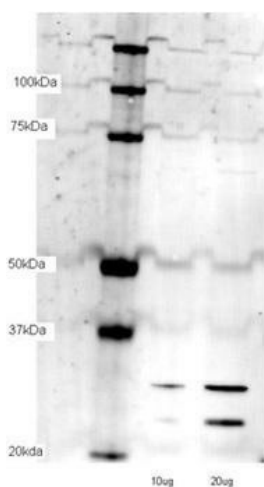
Protein Families: Druggable Genome, Transcription Factors

Protein Pathways: Huntington's disease

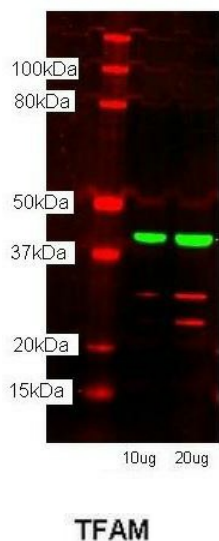
Product images:



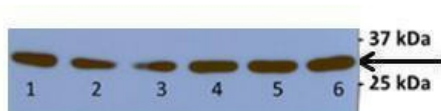
WB Suggested Anti-TFAM Antibody Titration: 0.2-1 ug/ml; ELISA Titer: 1:1562500; Positive Control: Jurkat cell lysate



TFAM antibody - N-terminal region validated by WB using bEND3 cell lysate at Lane 1:10 ug, Lane 2:20 ug.



TFAM antibody - N-terminal region validated by WB using bEND3 cell lysate at Lane 1:10 ug, Lane 2:20 ug.



Lanes: Lane 1 and 2: HepG2 cell lysate; Lane 3 and 4: Hep3B cell lysate; Lane 5 and 6: K562 cell lysate; Primary Antibody Dilution: 1:1000; Secondary Antibody: ; Secondary Antibody Dilution: 1:1000; Gene Name: TFAM; Submitted by: Anonymous;

See Immunoblot 4 Data and Customer Feedback for more information