

## Product datasheet for **TA329262**

### MSX1 Rabbit Polyclonal Antibody

#### Product data:

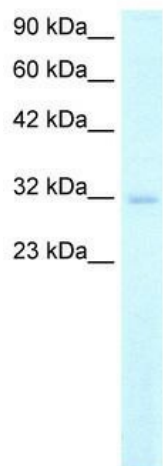
Product Type:	Primary Antibodies
Applications:	IHC, WB
Recommended Dilution:	WB, IHC
Reactivity:	Human
Host:	Rabbit
Isotype:	IgG
Clonality:	Polyclonal
Immunogen:	The immunogen for anti-MSX1 antibody: synthetic peptide directed towards the middle region of human MSX1. Synthetic peptide located within the following region: SLGAPDAPSSRPLGHFSVGGLLKLPEDALVKAESPEKPERTPWMQSPRF
Formulation:	Liquid. Purified antibody supplied in 1x PBS buffer with 0.09% (w/v) sodium azide and 2% sucrose. <i>Note that this product is shipped as lyophilized powder to China customers.</i>
Conjugation:	Unconjugated
Storage:	Store at -20°C as received.
Stability:	Stable for 12 months from date of receipt.
Predicted Protein Size:	31 kDa
Gene Name:	msh homeobox 1
Database Link:	<a href="#">NP_002439</a> <a href="#">Entrez Gene 4487 Human P28360</a>
Background:	Slightly proximal to the Huntington disease locus, the human MSX1 gene is deleted in patients with Wolf-Hirschhorn syndrome. This gene is also called HOX7. The Msx family of vertebrate HOX genes was originally isolated by homology to the Drosophila msh (muscle segment homeo box) gene. This is a candidate gene for human cleft palate.
Synonyms:	ECTD3; HOX7; HYD1; STHAG1
Note:	Immunogen sequence homology: Dog: 100%; Pig: 100%; Rat: 100%; Horse: 100%; Human: 100%; Bovine: 100%; Guinea pig: 100%; Mouse: 86%



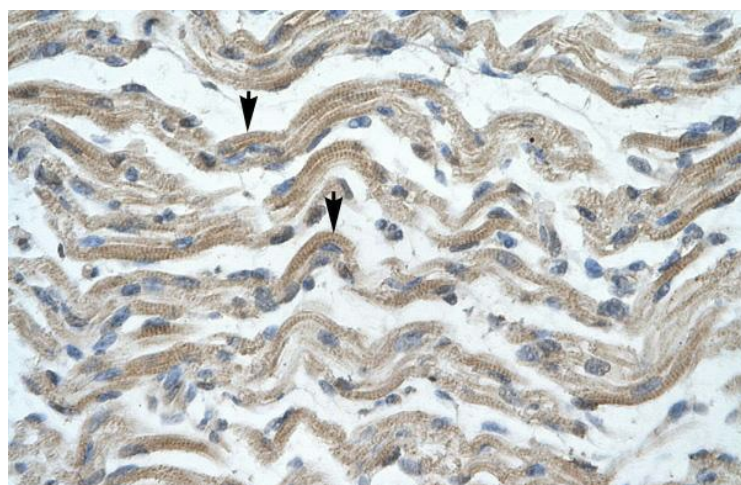
[View online »](#)

Protein Families: Druggable Genome, Transcription Factors

### Product images:



WB Suggested Anti-MSX1 Antibody Titration:  
2.0ug/ml; ELISA Titer: 1:62500; Positive Control:  
Human Kidney



Human Muscle