

Product datasheet for **TA329261**

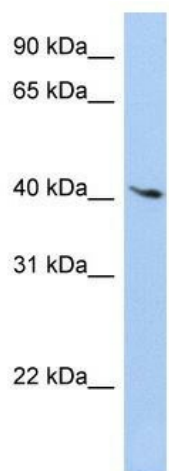
LYL1 Rabbit Polyclonal Antibody

Product data:

Product Type:	Primary Antibodies
Applications:	WB
Recommended Dilution:	WB
Reactivity:	Human
Host:	Rabbit
Isotype:	IgG
Clonality:	Polyclonal
Immunogen:	The immunogen for anti-LYL1 antibody: synthetic peptide directed towards the C terminal of human LYL1. Synthetic peptide located within the following region: PDDGARRGSGRRAEAAARSQPAPPADPDGSPGGAARPIKMEQTALSPEVR
Formulation:	Liquid. Purified antibody supplied in 1x PBS buffer with 0.09% (w/v) sodium azide and 2% sucrose. <i>Note that this product is shipped as lyophilized powder to China customers.</i>
Conjugation:	Unconjugated
Storage:	Store at -20°C as received.
Stability:	Stable for 12 months from date of receipt.
Predicted Protein Size:	38 kDa
Gene Name:	lymphoblastic leukemia associated hematopoiesis regulator 1
Database Link:	NP_005574 Entrez Gene 4066 Human P12980
Background:	LYL1 contains 1 basic helix-loop-helix (bHLH) domain. A chromosomal aberration, translocation t (7;19)(q35;p13) with TCRB, involving LYL1 may be a cause of a form of T-cell acute lymphoblastic leukemia (T-ALL).
Synonyms:	bHLHa18
Note:	Immunogen sequence homology: Human: 100%; Pig: 92%
Protein Families:	Druggable Genome, Transcription Factors



[View online »](#)

Product images:

WB Suggested Anti-LYL1 Antibody Titration: 0.2-1 ug/ml; Positive Control: HepG2 cell lysate