

Product datasheet for TA329256

Hoxb1 Rabbit Polyclonal Antibody

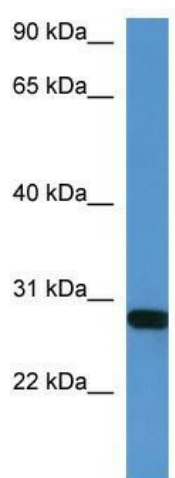
Product data:

Product Type:	Primary Antibodies
Applications:	WB
Recommended Dilution:	WB
Reactivity:	Mouse
Host:	Rabbit
Isotype:	IgG
Clonality:	Polyclonal
Immunogen:	The immunogen for anti-Hoxb1 antibody: synthetic peptide corresponding to a region of Mouse. Synthetic peptide located within the following region: ETQVKIWFQNRRMKQKKREREGGRMPAGPPGCPKEAAGDASDQSACTSPE
Formulation:	Liquid. Purified antibody supplied in 1x PBS buffer with 0.09% (w/v) sodium azide and 2% sucrose. <i>Note that this product is shipped as lyophilized powder to China customers.</i>
Conjugation:	Unconjugated
Storage:	Store at -20°C as received.
Stability:	Stable for 12 months from date of receipt.
Predicted Protein Size:	31 kDa
Gene Name:	homeobox B1
Database Link:	NP_032292 Entrez Gene 15407 Mouse P17919
Background:	Hoxb1 is a sequence-specific transcription factor which is part of a developmental regulatory system that provides cells with specific positional identities on the anterior-posterior axis. It acts on the anterior body structures.
Synonyms:	Hox-2.9; Hox-2l; HOX2; HOX2l; MGC116843; MGC116844; MGC116845
Note:	Immunogen sequence homology: Dog: 100%; Pig: 100%; Rat: 100%; Horse: 100%; Human: 100%; Mouse: 100%; Bovine: 100%; Rabbit: 100%; Guinea pig: 100%; Zebrafish: 90%



[View online »](#)

Product images:



WB Suggested Anti-Hoxb1 Antibody Titration: 0.2-1 ug/ml; ELISA Titer: 1:312500; Positive Control: Mouse Heart