

Product datasheet for **TA329255**

Hlf Rabbit Polyclonal Antibody

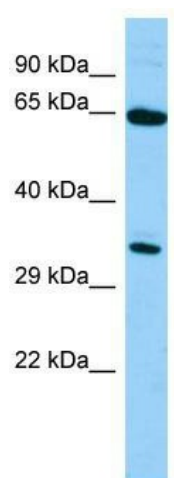
Product data:

| | |
|-------------------------|--|
| Product Type: | Primary Antibodies |
| Applications: | WB |
| Recommended Dilution: | WB |
| Reactivity: | Mouse |
| Host: | Rabbit |
| Isotype: | IgG |
| Clonality: | Polyclonal |
| Immunogen: | The immunogen for Anti-Hlf antibody is: synthetic peptide directed towards the N-terminal region of Mouse Hlf. Synthetic peptide located within the following region: MEKMSRQLPLNPTFIPPPYGVLRSLLLENPLKLPLHPEDAFSKEKDKGKKL |
| Formulation: | Liquid. Purified antibody supplied in 1x PBS buffer with 0.09% (w/v) sodium azide and 2% sucrose. <i>Note that this product is shipped as lyophilized powder to China customers.</i> |
| Conjugation: | Unconjugated |
| Storage: | Store at -20°C as received. |
| Stability: | Stable for 12 months from date of receipt. |
| Predicted Protein Size: | 33 kDa |
| Gene Name: | hepatic leukemia factor |
| Database Link: | NP_766151 Entrez Gene 217082 Mouse Q8BW74 |
| Background: | The function of this protein remains unknown. |
| Synonyms: | MGC33822 |
| Note: | Immunogen sequence homology: Dog: 100%; Pig: 100%; Human: 100%; Rat: 93%; Sheep: 93%; Bovine: 93%; Guinea pig: 93%; Horse: 92%; Mouse: 86%; Rabbit: 83% |



[View online »](#)

Product images:



WB Suggested Anti-Hlf Antibody; Titration: 1.0 ug/ml; Positive Control: Mouse Testis