

Product datasheet for **TA329252**

FRA1 (FOSL1) Rabbit Polyclonal Antibody

Product data:

Product Type:	Primary Antibodies
Applications:	IHC, WB
Recommended Dilution:	WB, IHC
Reactivity:	Human, Rat
Host:	Rabbit
Isotype:	IgG
Clonality:	Polyclonal
Immunogen:	The immunogen for anti-FOSL1 antibody: synthetic peptide directed towards the middle region of human FOSL1. Synthetic peptide located within the following region: TDFLQAETDKLEDEKSGLQREIEELQKQKERLELVLEAHRPICKIPEGAK
Formulation:	Liquid. Purified antibody supplied in 1x PBS buffer with 0.09% (w/v) sodium azide and 2% sucrose. <i>Note that this product is shipped as lyophilized powder to China customers.</i>
Conjugation:	Unconjugated
Storage:	Store at -20°C as received.
Stability:	Stable for 12 months from date of receipt.
Predicted Protein Size:	29 kDa
Gene Name:	FOS like 1, AP-1 transcription factor subunit
Database Link:	NP_005429 Entrez Gene 25445 Rat Entrez Gene 8061 Human P15407
Background:	The Fos gene family consists of 4 members: FOS, FOSB, FOSL1, and FOSL2. These genes encode leucine zipper proteins that can dimerize with proteins of the JUN family, thereby forming the transcription factor complex AP-1. The FOS proteins have been implicated as regulators of cell proliferation, differentiation, and transformation. The Fos gene family consists of 4 members: FOS, FOSB, FOSL1, and FOSL2. These genes encode leucine zipper proteins that can dimerize with proteins of the JUN family, thereby forming the transcription factor complex AP-1. As such, the FOS proteins have been implicated as regulators of cell proliferation, differentiation, and transformation.



[View online »](#)

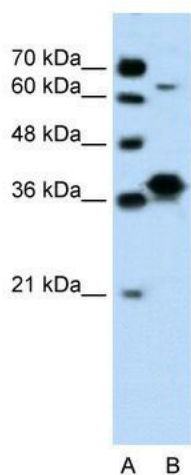
Synonyms: FRA; fra-1; FRA1

Note: Immunogen sequence homology: Dog: 100%; Pig: 100%; Rat: 100%; Horse: 100%; Human: 100%; Mouse: 100%; Bovine: 100%; Guinea pig: 100%; Rabbit: 93%; Sheep: 85%; Zebrafish: 85%

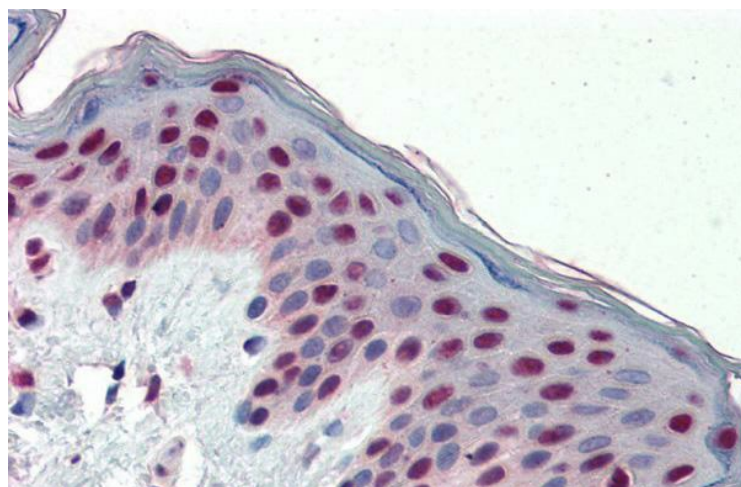
Protein Families: Druggable Genome, Transcription Factors

Protein Pathways: Wnt signaling pathway

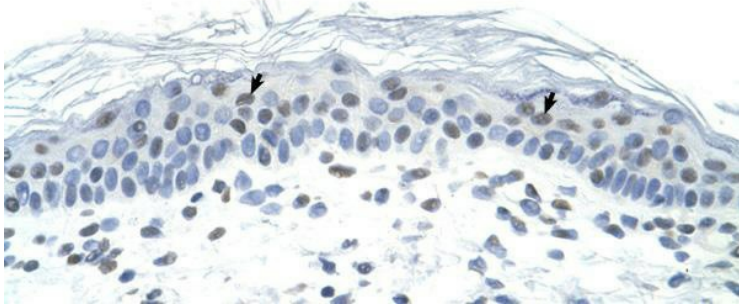
Product images:



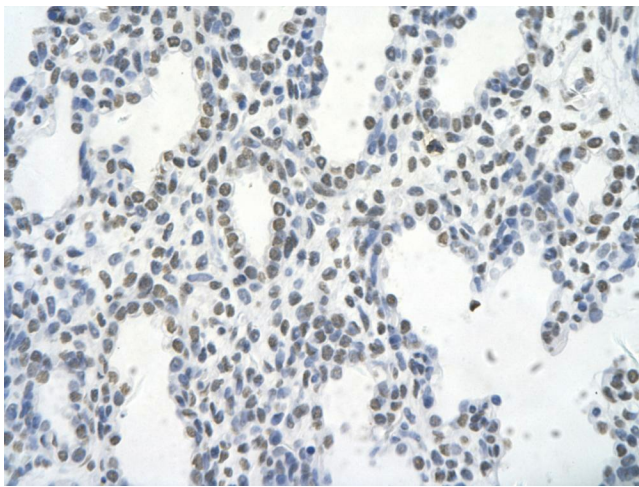
WB Suggested Anti-FOSL1 Antibody Titration: 0.2-1 ug/ml; ELISA Titer: 1:312500; Positive Control: Jurkat cell lysate



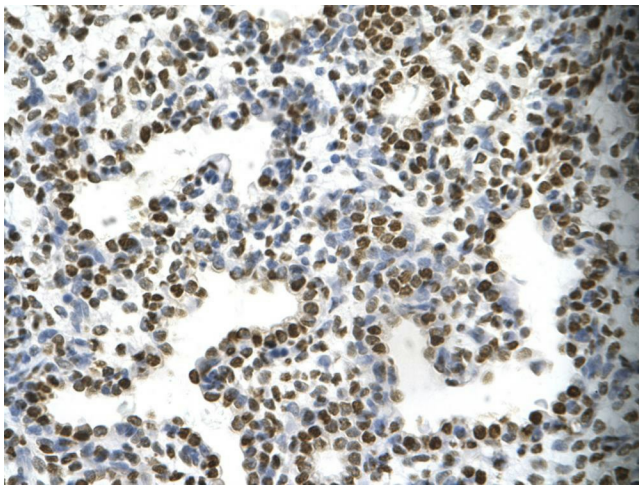
Immunohistochemistry with Human Skin lysate tissue at an antibody concentration of 5.0ug/ml using anti-FOSL1 antibody



Human Skin



Rabbit Anti-FOSL1 Antibody; Paraffin Embedded Tissue: Human alveolar cell; Cellular Data: Epithelial cells of renal tubule; Antibody Concentration: 4.0-8.0 ug/ml; Magnification: 400X



Rabbit Anti-FOSL1 Antibody; Paraffin Embedded Tissue: Human alveolar cell; Cellular Data: Epithelial cells of renal tubule; Antibody Concentration: 4.0-8.0 ug/ml; Magnification: 400X