

## Product datasheet for TA329251

### EN2 Rabbit Polyclonal Antibody

#### Product data:

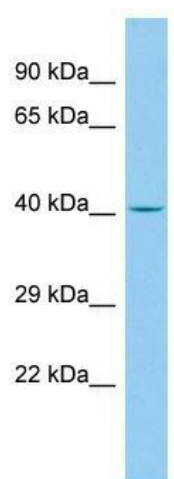
Product Type:	Primary Antibodies
Applications:	IHC, WB
Recommended Dilution:	IHC, WB
Reactivity:	Human
Host:	Rabbit
Isotype:	IgG
Clonality:	Polyclonal
Immunogen:	The immunogen for Anti-EN2 antibody is: synthetic peptide directed towards the C-terminal region of Human EN2. Synthetic peptide located within the following region: NESQIKIWFQNKRAKIKKATGNKNTLAVHLMAGLYNHSTTAKEGKSDSE
Formulation:	Liquid. Purified antibody supplied in 1x PBS buffer with 0.09% (w/v) sodium azide and 2% sucrose. <i>Note that this product is shipped as lyophilized powder to China customers.</i>
Conjugation:	Unconjugated
Storage:	Store at -20°C as received.
Stability:	Stable for 12 months from date of receipt.
Predicted Protein Size:	34 kDa
Gene Name:	engrailed homeobox 2
Database Link:	<a href="#">NP_001418</a> <a href="#">Entrez Gene 2020 Human P19622</a>
Background:	Homeobox-containing genes are thought to have a role in controlling development. The human engrailed homologs 1 and 2 encode homeodomain-containing proteins and have been implicated in the control of pattern formation during development of the central nervous system.
Synonyms:	AUTS1; AUTS10; engrailed-2; engrailed homeobox 2; engrailed homolog 2
Note:	Immunogen sequence homology: Dog: 100%; Pig: 100%; Rat: 100%; Horse: 100%; Human: 100%; Mouse: 100%; Guinea pig: 100%; Zebrafish: 85%



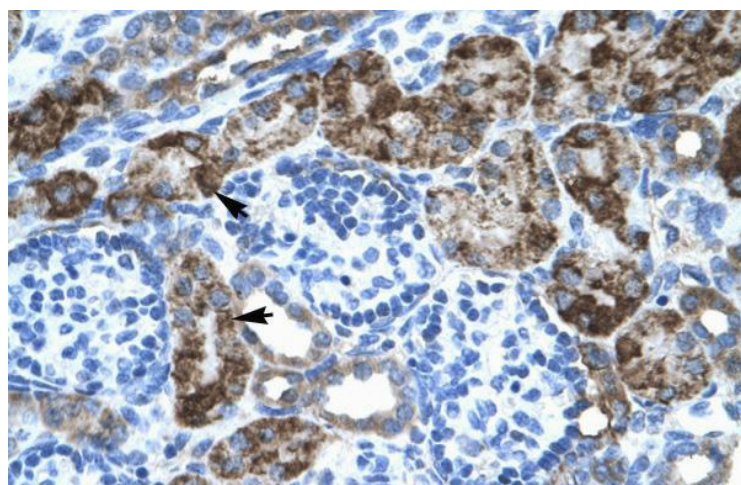
[View online »](#)

Protein Families: Druggable Genome, ES Cell Differentiation/IPS

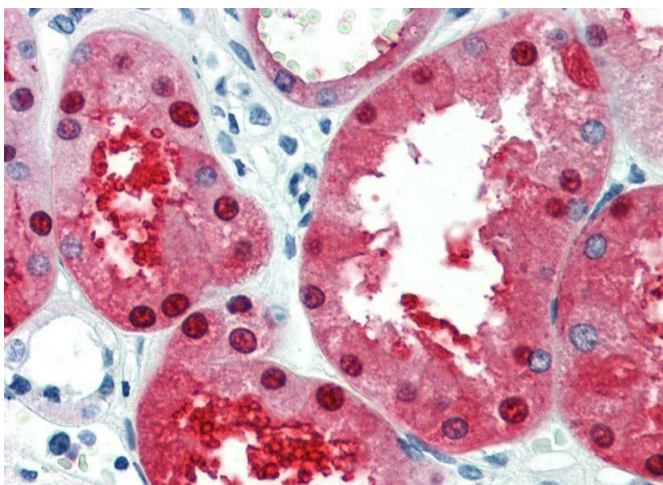
### Product images:



WB Suggested Anti-EN2 Antibody Titration:  
0.05ug/ml; ELISA Titer: 1:2500; Positive Control:  
Human cerebellum



Rabbit Anti-EN2 Antibody; Paraffin Embedded  
Tissue: Human Kidney; Cellular Data: Epithelial  
cells of renal tubule; Antibody Concentration: 4.0-  
8.0 ug/ml; Magnification: 400X



Human Kidney