

Product datasheet for **TA329250**

KLF9 Rabbit Polyclonal Antibody

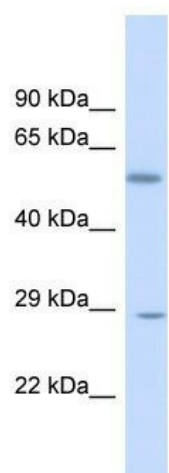
Product data:

| | |
|-------------------------|--|
| Product Type: | Primary Antibodies |
| Applications: | IHC, WB |
| Recommended Dilution: | IHC, WB |
| Reactivity: | Human, Rat |
| Host: | Rabbit |
| Isotype: | IgG |
| Clonality: | Polyclonal |
| Immunogen: | The immunogen for Anti-KLF9 antibody is: synthetic peptide directed towards the N-terminal region of Human KLF9. Synthetic peptide located within the following region: LPEREVTKEHGDPGDTWKDYCTLVTIAKSLLDLNKYRPIQTPSVCSDSLE |
| Formulation: | Liquid. Purified antibody supplied in 1x PBS buffer with 0.09% (w/v) sodium azide and 2% sucrose. <i>Note that this product is shipped as lyophilized powder to China customers.</i> |
| Conjugation: | Unconjugated |
| Storage: | Store at -20°C as received. |
| Stability: | Stable for 12 months from date of receipt. |
| Predicted Protein Size: | 27 kDa |
| Gene Name: | Kruppel-like factor 9 |
| Database Link: | NP_001197 Entrez Gene 117560 Rat Entrez Gene 687 Human Q13886 |
| Background: | KLF9 is a transcription factor that binds to GC box elements located in the promoter. Binding of the encoded protein to a single GC box inhibits mRNA expression while binding to tandemly repeated GC box elements activates transcription. |
| Synonyms: | BTEB; BTEB1 |
| Note: | Immunogen sequence homology: Pig: 100%; Rat: 100%; Horse: 100%; Human: 100%; Mouse: 100%; Bovine: 100%; Rabbit: 100%; Guinea pig: 100%; Dog: 86% |

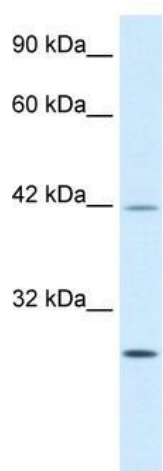


[View online »](#)

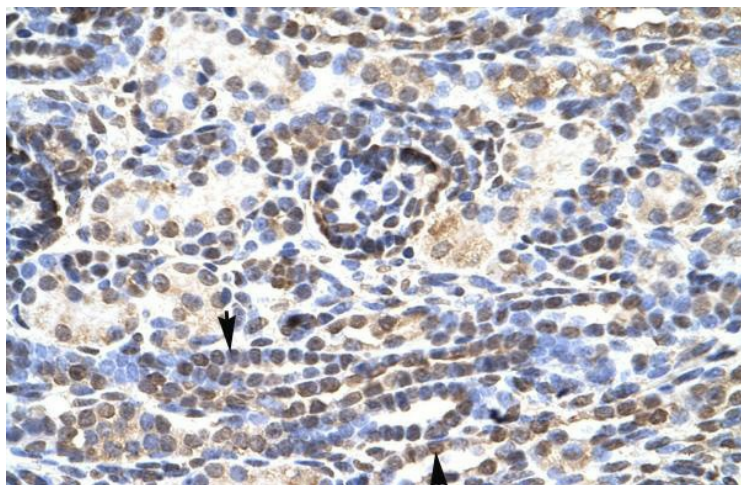
Product images:



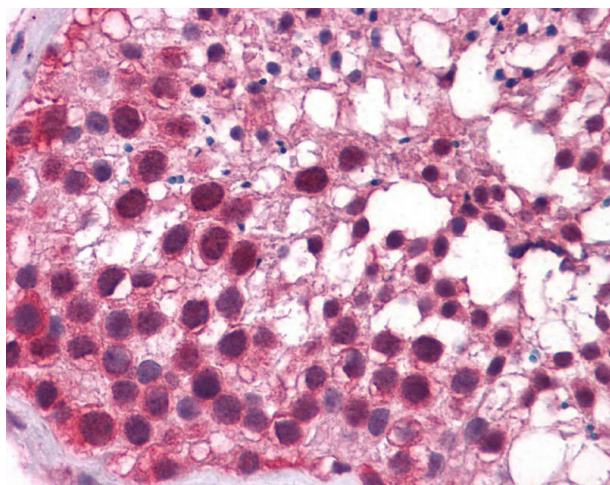
Host: Rabbit; Target Name: KLF9; Sample Tissue: Fetal Liver lysates; Antibody Dilution: 1.0ug/ml



WB Suggested Anti-KLF9 Antibody Titration: 0.2-1 ug/ml ELISA Titer: 1:1562500 Positive Control: Jurkat



Rabbit Anti-KLF9 Antibody; Paraffin Embedded Tissue: Human Kidney; Cellular Data: Epithelial cells of renal tubule; Antibody Concentration: 4.0-8.0 ug/ml; Magnification: 400X



Testis