

Product datasheet for **TA329248**

ATF1 Rabbit Polyclonal Antibody

Product data:

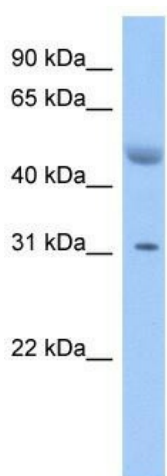
Product Type:	Primary Antibodies
Applications:	WB
Recommended Dilution:	WB
Reactivity:	Human
Host:	Rabbit
Isotype:	IgG
Clonality:	Polyclonal
Immunogen:	The immunogen for Anti-ATF1 antibody is: synthetic peptide directed towards the N-terminal region of Human ATF1. Synthetic peptide located within the following region: DLSSDTRGRKGDGENSGVSAAVTSMVPTPIYQTSSGQYIAIAPNGALQ
Formulation:	Liquid. Purified antibody supplied in 1x PBS buffer with 0.09% (w/v) sodium azide and 2% sucrose. <i>Note that this product is shipped as lyophilized powder to China customers.</i>
Purification:	Affinity Purified
Conjugation:	Unconjugated
Storage:	Store at -20°C as received.
Stability:	Stable for 12 months from date of receipt.
Predicted Protein Size:	29 kDa
Gene Name:	activating transcription factor 1
Database Link:	NP_005162 Entrez Gene 466 Human P18846
Background:	ATF1 binds the cAMP response element (CRE) (consensus: 5'-GTGACGT [AC] [AG]-3'), a sequence present in many viral and cellular promoters. ATF1 binds to the Tax-responsive element (TRE) of HTLV-I. ATF1 mediates PKA-induced stimulation of CRE-reporter genes.
Synonyms:	ATF-1; EWS-ATF1; FUS; TREB36
Note:	Immunogen sequence homology: Dog: 100%; Pig: 100%; Rat: 100%; Horse: 100%; Human: 100%; Rabbit: 100%; Guinea pig: 100%; Mouse: 92%; Bovine: 92%



[View online »](#)

Protein Families: Druggable Genome, Transcription Factors

Product images:



Host: Rabbit

Target Name: ATF1

Sample Tissue: Fetal Brain Lysate

Antibody Dilution: 1.0µg/ml

Host: Rabbit; Target Name: ATF1; Sample Tissue: Fetal Brain lysates; Antibody Dilution: 1.0ug/ml