

Product datasheet for TA329246

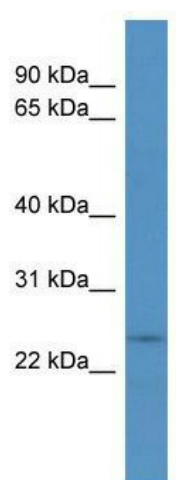
Cyhr1 Rabbit Polyclonal Antibody

Product data:

Product Type:	Primary Antibodies
Applications:	WB
Recommended Dilution:	WB
Reactivity:	Mouse
Host:	Rabbit
Isotype:	IgG
Clonality:	Polyclonal
Immunogen:	The immunogen for anti-Cyhr1 antibody: synthetic peptide corresponding to a region of Mouse. Synthetic peptide located within the following region: LAPGPSTHEDCLAGAWVATVIGLPLLAFFDFHWVNGDRSSANLLLGGGMVL
Formulation:	Liquid. Purified antibody supplied in 1x PBS buffer with 0.09% (w/v) sodium azide and 2% sucrose. <i>Note that this product is shipped as lyophilized powder to China customers.</i>
Conjugation:	Unconjugated
Storage:	Store at -20°C as received.
Stability:	Stable for 12 months from date of receipt.
Predicted Protein Size:	20 kDa
Gene Name:	cysteine and histidine rich 1
Database Link:	NP_851293 Entrez Gene 54151 Mouse Q9QXA1
Background:	The function of Cyhr1 remains unknown.
Synonyms:	CHRP; KIAA0496; MGC13010
Note:	Immunogen sequence homology: Rat: 100%; Human: 100%; Mouse: 100%; Bovine: 93%



[View online »](#)

Product images:

WB Suggested Anti-Cyhr1 Antibody Titration: 0.2-1 ug/ml; ELISA Titer: 1:12500; Positive Control: Mouse Heart