

## Product datasheet for **TA329242**

### Taf12 Rabbit Polyclonal Antibody

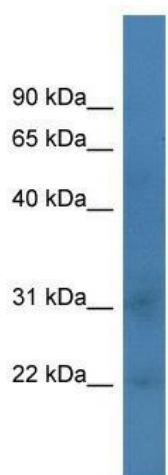
#### Product data:

Product Type:	Primary Antibodies
Applications:	WB
Recommended Dilution:	WB
Reactivity:	Mouse
Host:	Rabbit
Isotype:	IgG
Clonality:	Polyclonal
Immunogen:	The immunogen for anti-Taf12 antibody: synthetic peptide corresponding to a region of Mouse. Synthetic peptide located within the following region: EVKDVQLHLERQWNMWIPGFGSEEIRPYKKACTTEAHKQRMALIRKTTKK
Formulation:	Liquid. Purified antibody supplied in 1x PBS buffer with 0.09% (w/v) sodium azide and 2% sucrose. <i>Note that this product is shipped as lyophilized powder to China customers.</i>
Conjugation:	Unconjugated
Storage:	Store at -20°C as received.
Stability:	Stable for 12 months from date of receipt.
Predicted Protein Size:	18 kDa
Gene Name:	TATA-box binding protein associated factor 12
Database Link:	<a href="#">NP_079855</a> <a href="#">Entrez Gene 66464 Mouse</a> <a href="#">Q8VE65</a>
Background:	TAFs are components of the transcription factor IID (TFIID) complex, PCAF histone acetylase complex and TBP-free TAFII complex (TFTC). TAFs components-TIIFD are essential for mediating regulation of RNA polymerase transcription.
Synonyms:	TAF2j; TAF15; TAFII-20/TAFII-15; TAFII20; TAFII20/TAFII15
Note:	Immunogen sequence homology: Dog: 100%; Pig: 100%; Rat: 100%; Horse: 100%; Human: 100%; Mouse: 100%; Bovine: 100%; Rabbit: 100%; Zebrafish: 100%; Guinea pig: 100%



[View online »](#)

Product images:



WB Suggested Anti-Taf12 Antibody Titration: 0.2-1 ug/ml; ELISA Titer: 1:7812500; Positive Control: Mouse Spleen