

## Product datasheet for **TA329239**

### Lmo1 Rabbit Polyclonal Antibody

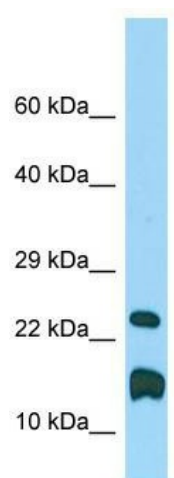
#### Product data:

Product Type:	Primary Antibodies
Applications:	WB
Recommended Dilution:	WB
Reactivity:	Rat
Host:	Rabbit
Isotype:	IgG
Clonality:	Polyclonal
Immunogen:	The immunogen for Anti-Lmo1 antibody is: synthetic peptide directed towards the C-terminal region of Rat Lmo1. Synthetic peptide located within the following region: NVYHLDCFACQLCNQRFCVGDKFFLKNNMILCQMDYEEGHLNGTFESQVQ
Formulation:	Liquid. Purified antibody supplied in 1x PBS buffer with 0.09% (w/v) sodium azide and 2% sucrose. <i>Note that this product is shipped as lyophilized powder to China customers.</i>
Conjugation:	Unconjugated
Storage:	Store at -20°C as received.
Stability:	Stable for 12 months from date of receipt.
Predicted Protein Size:	17 kDa
Gene Name:	LIM domain only 1
Database Link:	<a href="#">NP_620812</a> <a href="#">Entrez Gene 245979 Rat</a>
Background:	Lmo1 is a dopamine-inducible transcription factor in astrocytes.
Synonyms:	MGC116692; RBTN1; RHOM1; TTG1
Note:	Immunogen sequence homology: Dog: 100%; Pig: 100%; Rat: 100%; Horse: 100%; Human: 100%; Guinea pig: 100%; Mouse: 93%; Bovine: 86%; Rabbit: 86%; Zebrafish: 86%



[View online »](#)

## Product images:



WB Suggested Anti-Lmo1 Antibody; Titration: 1.0 ug/ml; Positive Control: Rat Testis