

## Product datasheet for **TA329238**

### Islet 1 (ISL1) Rabbit Polyclonal Antibody

#### Product data:

Product Type:	Primary Antibodies
Applications:	WB
Recommended Dilution:	WB
Reactivity:	Human
Host:	Rabbit
Isotype:	IgG
Clonality:	Polyclonal
Immunogen:	The immunogen for Anti-ISL1 antibody is: synthetic peptide directed towards the C-terminal region of Human ISL1. Synthetic peptide located within the following region: IMMKQLQQQPNDKTNIQGMTGTPMVAASPERHDGGLQANPVEVQSYQPP
Formulation:	Liquid. Purified antibody supplied in 1x PBS buffer with 0.09% (w/v) sodium azide and 2% sucrose. <i>Note that this product is shipped as lyophilized powder to China customers.</i>
Purification:	Affinity Purified
Conjugation:	Unconjugated
Storage:	Store at -20°C as received.
Stability:	Stable for 12 months from date of receipt.
Predicted Protein Size:	39 kDa
Gene Name:	ISL LIM homeobox 1
Database Link:	<a href="#">NP_002193</a> <a href="#">Entrez Gene 3670 Human P61371</a>
Background:	ISL1 is a member of the LIM/homeodomain family of transcription factors. It binds to the enhancer region of the insulin gene, among others, and may play an important role in regulating insulin gene expression. ISL1 is central to the development of pancreatic cell lineages and may also be required for motor neuron generation.
Synonyms:	Isl-1; ISLET1

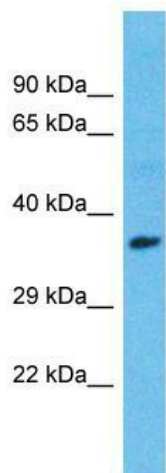


[View online »](#)

**Note:** Immunogen sequence homology: Dog: 100%; Pig: 100%; Rat: 100%; Horse: 100%; Human: 100%; Mouse: 100%; Sheep: 100%; Bovine: 100%; Rabbit: 100%; Guinea pig: 100%; Zebrafish: 93%

**Protein Families:** ES Cell Differentiation/IPS, Transcription Factors

**Product images:**



Host: Rabbit; Target Name: ISL1; Sample Tissue: Breast Tumor lysates; Antibody Dilution: 1.0ug/ml