

Product datasheet for **TA329236**

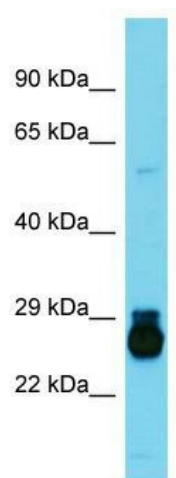
HOXC6 Rabbit Polyclonal Antibody

Product data:

Product Type:	Primary Antibodies
Applications:	WB
Recommended Dilution:	WB
Reactivity:	Rat
Host:	Rabbit
Isotype:	IgG
Clonality:	Polyclonal
Immunogen:	The immunogen for Anti-Hoxc6 antibody is: synthetic peptide directed towards the middle region of Rat Hoxc6. Synthetic peptide located within the following region: DFSSEQGRTAPQDQKASIQIYPWMQRMNSHSGVGYGADRRRGRQIYSRYQ
Formulation:	Liquid. Purified antibody supplied in 1x PBS buffer with 0.09% (w/v) sodium azide and 2% sucrose. <i>Note that this product is shipped as lyophilized powder to China customers.</i>
Purification:	Affinity Purified
Conjugation:	Unconjugated
Storage:	Store at -20°C as received.
Stability:	Stable for 12 months from date of receipt.
Predicted Protein Size:	25 kDa
Gene Name:	homeobox C6
Database Link:	NP_004494 Entrez Gene 252885 Rat P09630
Background:	Hoxc6 is a member of the homeobox family.
Synonyms:	CP25; HHO.C8; HOX3; HOX3C
Note:	Immunogen sequence homology: Dog: 100%; Pig: 100%; Rat: 100%; Horse: 100%; Human: 100%; Mouse: 100%; Sheep: 100%; Bovine: 100%; Guinea pig: 100%; Rabbit: 93%
Protein Families:	Transcription Factors



[View online »](#)

Product images:

Host: Rabbit; Target Name: Hoxc6; Sample
Tissue: Rat Small Intestine lysates; Antibody
Dilution: 1.0ug/ml