

Product datasheet for **TA329235**

FRA2 (FOSL2) Rabbit Polyclonal Antibody

Product data:

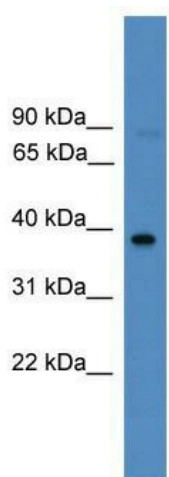
Product Type:	Primary Antibodies
Applications:	WB
Recommended Dilution:	WB
Reactivity:	Human, Mouse
Host:	Rabbit
Isotype:	IgG
Clonality:	Polyclonal
Immunogen:	The immunogen for anti-FOSL2 antibody: synthetic peptide directed towards the middle region of human FOSL2. Synthetic peptide located within the following region: KLQAETEELEEEKSGLQKEIAELQKEKEKLEFMLVAHGVPCKISPEERRS
Formulation:	Liquid. Purified antibody supplied in 1x PBS buffer with 0.09% (w/v) sodium azide and 2% sucrose. <i>Note that this product is shipped as lyophilized powder to China customers.</i>
Conjugation:	Unconjugated
Storage:	Store at -20°C as received.
Stability:	Stable for 12 months from date of receipt.
Predicted Protein Size:	35 kDa
Gene Name:	FOS like 2, AP-1 transcription factor subunit
Database Link:	NP_005244 Entrez Gene 14284 Mouse Entrez Gene 2355 Human P15408
Background:	The Fos gene family consists of 4 members: FOS, FOSB, FOSL1, and FOSL2, which encode leucine zipper proteins that can dimerize with proteins of the JUN family, thereby forming the transcription factor complex AP-1. The FOS proteins have been implicated as regulators of cell proliferation, differentiation, and transformation.
Synonyms:	FRA2
Note:	Immunogen sequence homology: Dog: 100%; Pig: 100%; Rat: 100%; Horse: 100%; Human: 100%; Mouse: 100%; Bovine: 100%; Rabbit: 100%; Guinea pig: 100%; Zebrafish: 79%



[View online »](#)

Protein Families: Druggable Genome, Transcription Factors

Product images:



WB Suggested Anti-FOSL2 Antibody Titration: 0.2-1 ug/ml; ELISA Titer: 1:62500; Positive Control: PANC1 cell lysate