

## Product datasheet for **TA329234**

### **FRA2 (FOSL2) Rabbit Polyclonal Antibody**

#### **Product data:**

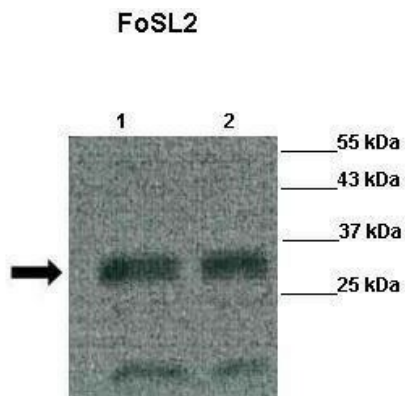
<b>Product Type:</b>	Primary Antibodies
<b>Applications:</b>	IHC, WB
<b>Recommended Dilution:</b>	WB, IHC
<b>Reactivity:</b>	Human, Zebrafish
<b>Host:</b>	Rabbit
<b>Isotype:</b>	IgG
<b>Clonality:</b>	Polyclonal
<b>Immunogen:</b>	The immunogen for anti-FOSL2 antibody: synthetic peptide directed towards the middle region of human FOSL2. Synthetic peptide located within the following region: PMRSGGGSVGAVVVKQEPLEEDSPSSSSAGLDKAQRSVIKIPISIAGGFY
<b>Formulation:</b>	Liquid. Purified antibody supplied in 1x PBS buffer with 0.09% (w/v) sodium azide and 2% sucrose. <i>Note that this product is shipped as lyophilized powder to China customers.</i>
<b>Conjugation:</b>	Unconjugated
<b>Storage:</b>	Store at -20°C as received.
<b>Stability:</b>	Stable for 12 months from date of receipt.
<b>Predicted Protein Size:</b>	35 kDa
<b>Gene Name:</b>	FOS like 2, AP-1 transcription factor subunit
<b>Database Link:</b>	<a href="#">NP_005244</a> <a href="#">Entrez Gene 2355 Human P15408</a>
<b>Background:</b>	The Fos gene family consists of 4 members: FOS, FOSB, FOSL1, and FOSL2, which encode leucine zipper proteins that can dimerize with proteins of the JUN family, thereby forming the transcription factor complex AP-1. The FOS proteins have been implicated as regulators of cell proliferation, differentiation, and transformation.
<b>Synonyms:</b>	FRA2
<b>Note:</b>	Immunogen sequence homology: Dog: 100%; Pig: 100%; Rat: 100%; Horse: 100%; Human: 100%; Bovine: 100%; Rabbit: 100%; Guinea pig: 100%; Mouse: 92%; Zebrafish: 91%



[View online »](#)

Protein Families: Druggable Genome, Transcription Factors

**Product images:**

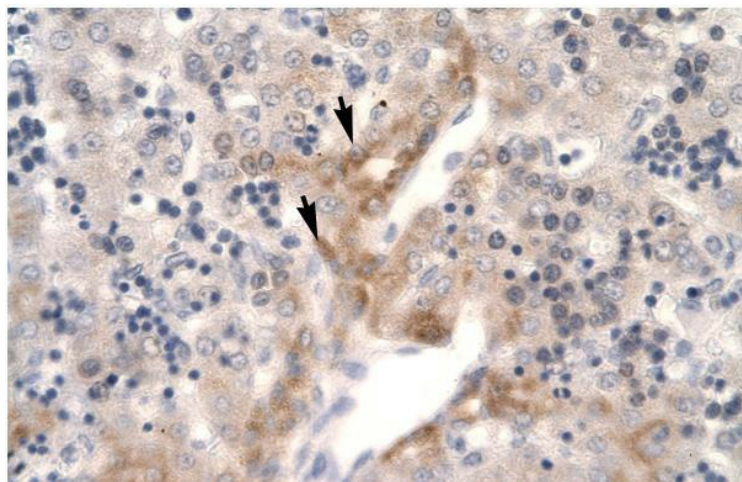


Lanes: Lane 1: 15ul purified zebrafish FoSL2 protein; Lane 2: 10ul purified zebrafish FoSL2 protein; Primary Antibody Dilution: 1:500; Secondary Antibody: Goat anti-rabbit HRP; Secondary Antibody Dilution: 1:5000; Gene Name: FOSL2; Submitted by: Leila Jahangiri, Massachusetts General Hospital, Harvard Medical School;

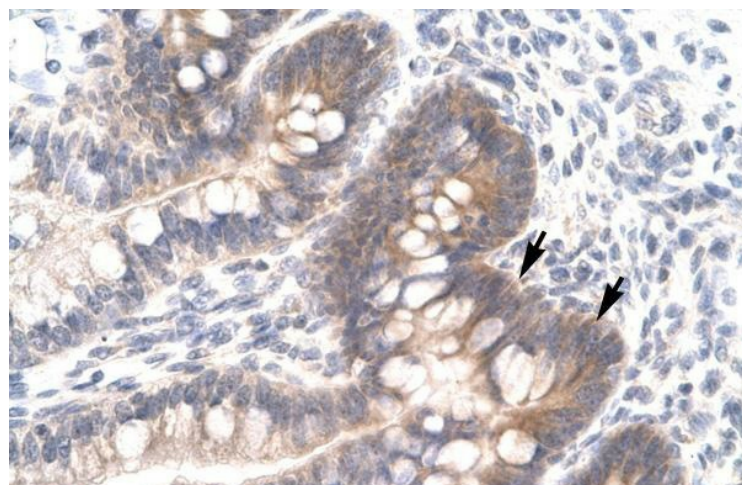
[See Immunoblot 2 Data and Customer Feedback for more Information](#)



WB Suggested Anti-FOSL2 Antibody Titration: 0.2-1 ug/ml; ELISA Titer: 1:312500; Positive Control: Jurkat cell lysate



Human Liver



Human Intestine