

Product datasheet for TA329231

CEBP Beta (CEBPB) Rabbit Polyclonal Antibody

Product data:

Product Type:	Primary Antibodies
Applications:	WB
Recommended Dilution:	WB
Reactivity:	Human
Host:	Rabbit
Isotype:	IgG
Clonality:	Polyclonal
Immunogen:	The immunogen for anti-CEBPB antibody: synthetic peptide directed towards the C terminal of human CEBPB. Synthetic peptide located within the following region: ADAKAPPTACYAGAAPAPSQVKS KAKKTVDKHSDEYKIRRERNNIAVRKS
Formulation:	Liquid. Purified antibody supplied in 1x PBS buffer with 0.09% (w/v) sodium azide and 2% sucrose. <i>Note that this product is shipped as lyophilized powder to China customers.</i>
Conjugation:	Unconjugated
Storage:	Store at -20°C as received.
Stability:	Stable for 12 months from date of receipt.
Predicted Protein Size:	36 kDa
Gene Name:	CCAAT/enhancer binding protein beta
Database Link:	NP_005185 Entrez Gene 1051 Human P17676
Background:	The protein encoded by this intronless gene, CEBPB, is a bZIP transcription factor which can bind as a homodimer to certain DNA regulatory regions. It can also form heterodimers with the related proteins CEBP-alpha, CEBP-delta, and CEBP-gamma. The encoded protein is important in the regulation of genes involved in immune and inflammatory responses and has been shown to bind to the IL-1 response element in the IL-6 gene, as well as to regulatory regions of several acute-phase and cytokine genes. In addition, the encoded protein can bind the promoter and upstream element and stimulate the expression of the collagen type I gene.



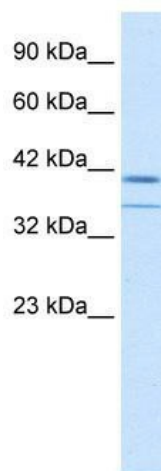
[View online »](#)

Synonyms: C; EBP-beta; IL6DBP; NF-IL6; TCF5

Note: Immunogen sequence homology: Dog: 100%; Pig: 100%; Human: 100%; Bovine: 100%; Guinea pig: 100%; Rabbit: 92%

Protein Families: Druggable Genome, ES Cell Differentiation/IPS, Transcription Factors

Product images:



WB Suggested Anti-CEBPB Antibody Titration: 0.2-1 ug/ml; ELISA Titer: 1:1562500; Positive Control: HepG2 cell lysate